



10/738-744 Lawrence Hargrave Drive Coledale, NSW



3



2



2

TRI-LEVEL TOWNHOUSE JUST METRES FROM THE BEACH

LOCATION

Positioned in the heart of the Coledale township, this immaculate townhouse is located within walking distance to absolutely everything! Moments from doorstep is a range of amenities including local shops, fabulous caf?s and dining options, Coledale Public School and Coledale RSL. The train station is also a short walk making the commute to work a breeze.

For the beach lover, location doesn't get any better than this! Take your pick from Coledale Beach, Sharkies Beach or the Rock Pool to enjoy an early morning, midday or afternoon ocean dip, all just meters from your front door.

PROPERTY

On the ground floor, you'll appreciate the double lock-up garage with space for additional

Price: Contact Agent

Council Rates: \$380.00 p/q

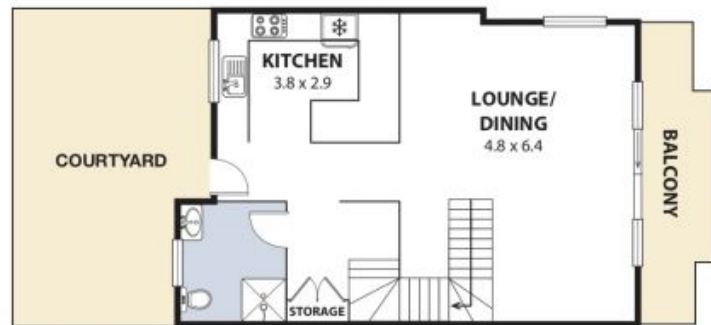
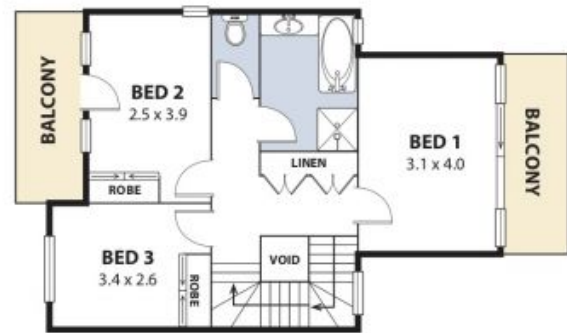
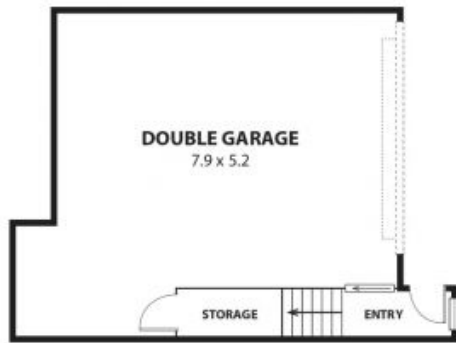
Water Rates: \$209.00 p/q

Strata Rates: \$645.00 p/q

Adam McMahon

Adam McMahon

02 4267 5377



Plans shown are for presentation purposes and are not part of any legal document or title and are subject to errors, omissions, inaccuracies and should not be used as sole and accurate references. Particulars given are for general information only and do not constitute any representation on the part of the vendor or agent. No liability will be accepted.