



20 Jaraga Circuit Thirroul, NSW



4



3



2

## Exquisite Coastal Architectural Design

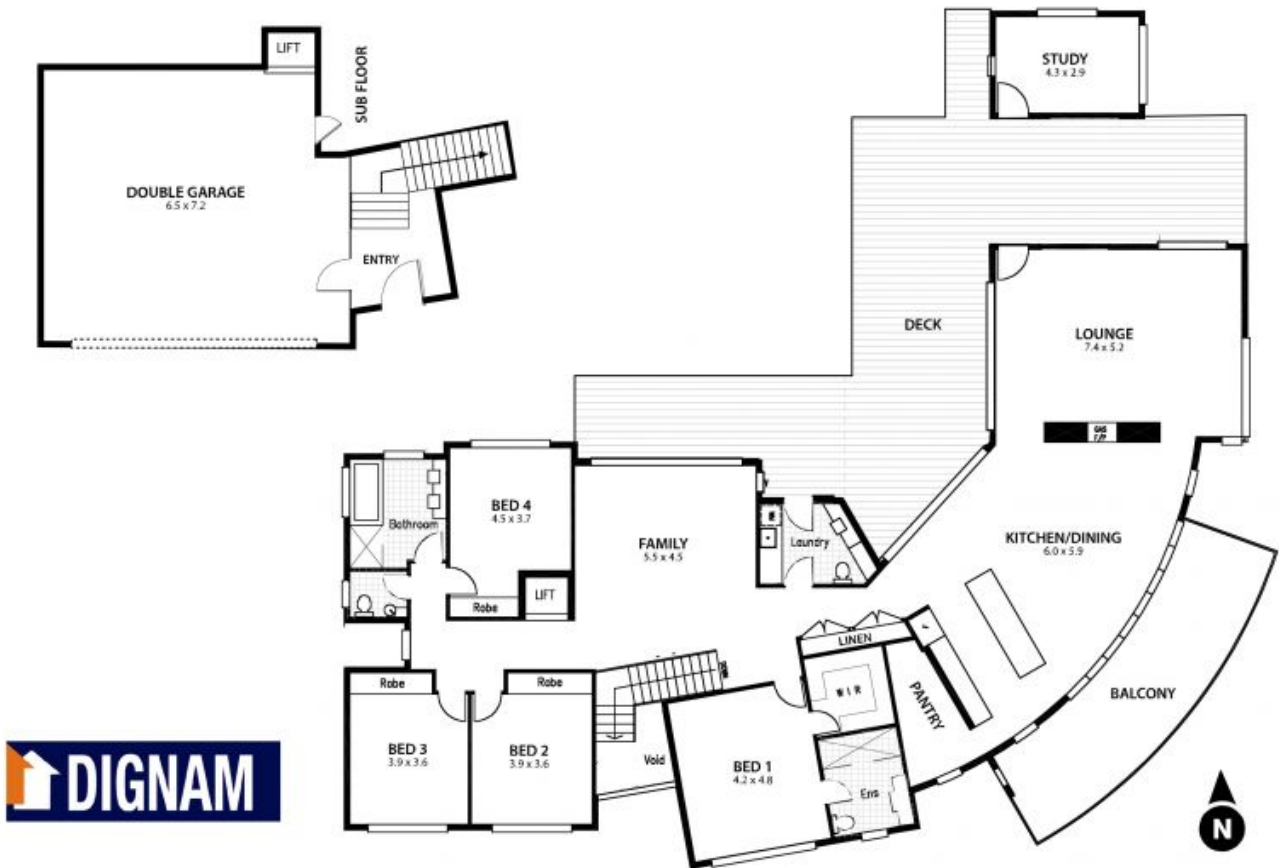
Presenting an exquisite architectural design emphasising space, light and expansive ocean views. This impressive sanctuary showcases quality finishes and attention to detail utilising both natural and modern finishes. A robust layout ensures functionality and indoor/outdoor flow for easy yet sophisticated coastal living. Features include:-

**Price:**

\$1,720,000

- Impressive home designed by renowned Architect Fred Whitehead
- Open plan kitchen, walk-in pantry and top of the range appliances
- Multiple living spaces flowing onto custom curved bi-fold doors to large front balcony
- Designed to maximize the sweeping ocean views to Sandon Point
- The option to work from home with a separate study pavilion
- Double lock-up garage with oversized workshop and water tanks
- A level family friendly block of 956sqm surrounded by multiple decks
- 2 Marble bathrooms plus powder room

**Adam McMahon**



Plans shown are for presentation purposes and are not part of any legal document or title and are subject to errors, omissions, inaccuracies and should not be used as sole and accurate reference. Particulars given are for general information only and do not constitute any representation on the part of the vendor or agent. No liability will be accepted.