



8/6-10 Catherine Street Gwynneville, NSW



2



1



1

TRENDY TWO BEDROOM UNIT

Conveniently located in the heart of Gwynneville Village is this top floor corner setting unit with a sunny north-east aspect, offering light and airy interiors, capturing elevated district views. Located only moments from Wollongong Central, pristine beaches, local cafes and transport options

Features include:

- Freshly painted and brand new flooring throughout
- Two bedrooms, master with built-in-robe
- Spacious light filled combined lounge-dining area
- Bright well appointed kitchen with gas cooktop
- Lock up garage with storage.
- Close proximity to University of Wollongong

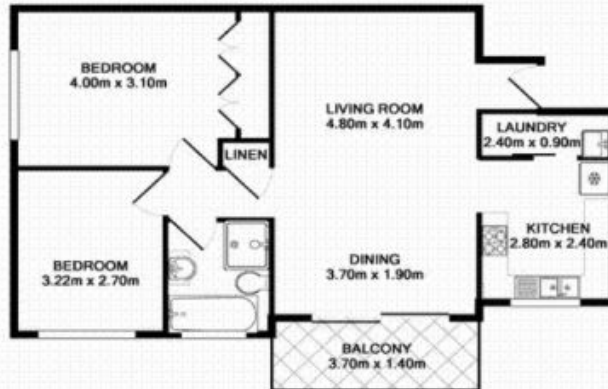
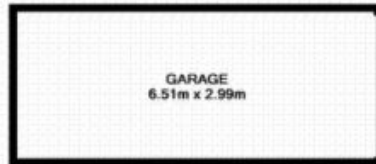
Contact Dignam Real Estate today on 4267 5377 or info@dignam.com.au to book your inspection time.

Price: \$385 pw

Available Date: 2020-12-10

Dignam Real Estate

Property Management



8/10 Catherine Street, Gwynneville
Total Approx. Floor Area 80.7 SQ.M