

Woonona, NSW



Second to None

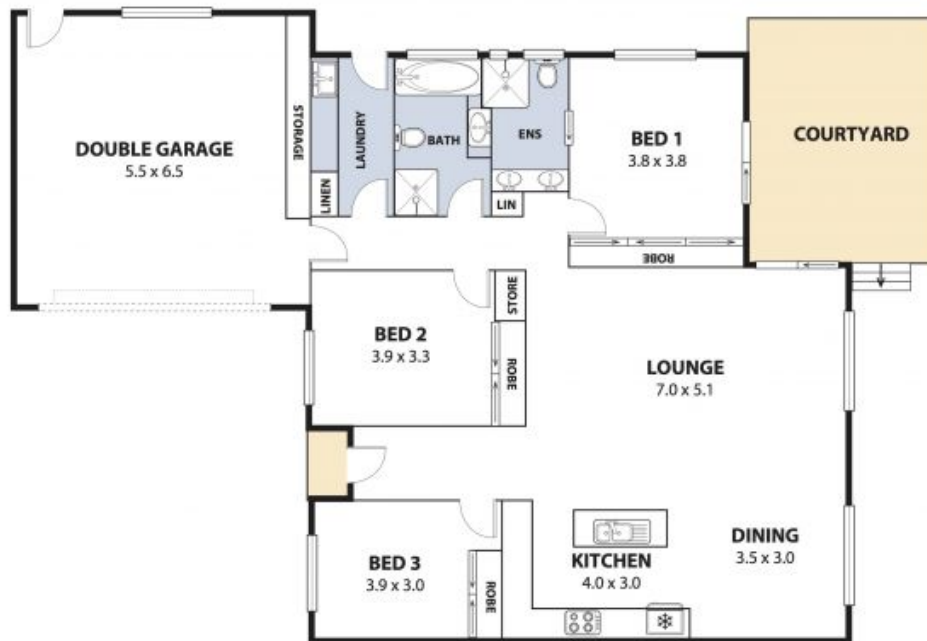
Upon entering this outstanding and spacious single level villa, you will immediately be impressed with the unsurpassed quality and thoroughly-considered design, which purposefully combine to facilitate elements of a relaxed and low-maintenance seaside lifestyle. The general feel of the residence is one of space and light, with large north facing windows capturing warmth and natural light from the sun, as well a picturesque and elevated outlook across the escarpment.

Features of the villa include:

- 3 comfortable double bedrooms, each with ample storage in the floor-to-ceiling built-in wardrobes.
- Huge open-plan living area with high ceilings and northerly aspect, giving an extra sense of space and natural light.
- 2 immaculate bathrooms with floor-to-ceiling tiles, Caesarstone surfaces and dual basins in the ensuite.
- Easy-entry attached double garage with remote door and internal access.

Price: \$745,000
Council Rates: \$1,030.00/year (approx)
Water Rates: \$265.00 p/q
Strata Rates: \$1,845.00/year (approx)

Adam McMahon



Plans shown are for presentation purposes and are not part of any legal document or title and are subject to errors, omissions, inaccuracies and should not be used as sole and accurate references. Particulars given are for general information only and do not constitute any representation on the part of the vendor or agent. No liability will be accepted.