

52a Lawrence Hargrave Drive Stanwell Park, NSW



4



2



2

Sustainable design meets coastal living.

This unique, modern family home makes the most of its northerly aspect with a blend of indoor and outdoor living areas. Enjoy a 10 minute stroll to Stanwell Park Beach or just relax in your own private oasis, this is coastal living at its best.

Large recycled timber sliding doors allow light to flood through the living spaces in winter, while mature deciduous trees provide a canopy of shade during the summer months. A log burning stove, underfloor heating - in the bathroom and foyer - and thermal properties of the concrete floors also keep the family comfortable year round.

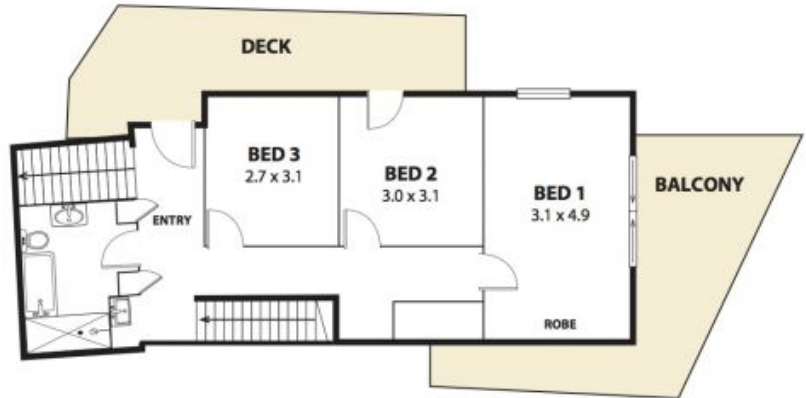
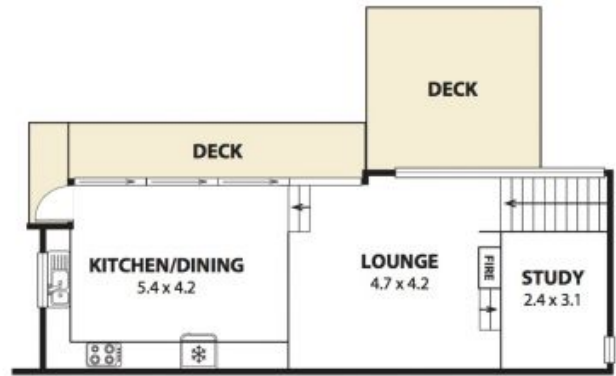
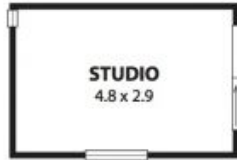
With dual access, ample space to entertain all year round and in close proximity to Sydney, this property is indeed a rare find!

Property Features:

- North facing aspect
- Open plan living, dining and kitchen
- Polished concrete floors
- Locally handmade recy

Price: \$1,251,000
Council Rates: \$520.00 p/q
Water Rates: \$250.00/year (approx)

Adam McMahon



Plans shown are for presentation purposes and are not part of any legal document or title and are subject to errors, omissions, inaccuracies and should not be used as sole and accurate reference. Particulars given are for general information only and do not constitute any representation on the part of the vendor or agent. No liability will be accepted.