



55/25 Carters Lane Fairy Meadow, NSW

 3
  2
  2

Penthouse Apartment

This light-infused Penthouse apartment delivers stylish and modern living with captivating views to lighthouse and coastline. Quietly set at the rear of a designer complex of four towers, the property displays sleek contemporary lines, elite fittings and practical living areas. Location is fantastically convenient with a short drive to the CBD, it offers an easy stroll to the beach, Wollongong Surf Leisure Club, Towradgi Beach Hotel, with trains just down the road and buses at the door.

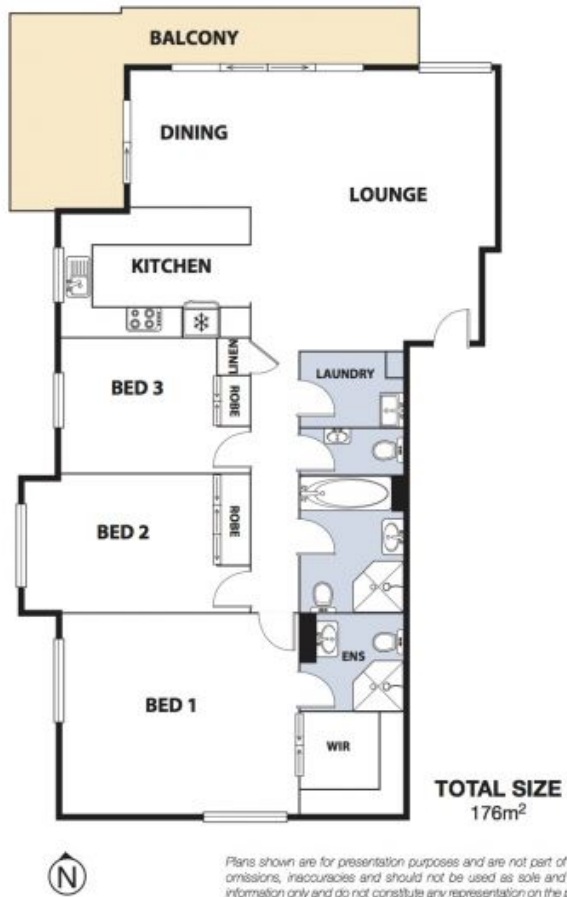
- Stylish open plan living and dining area with ample of natural lighting
- Oversized functional kitchen with plenty of storage/benchtap space with stainless steel appliances and breakfast bar
- Spacious main bedroom with large walk-in robe and ensuite
- Convenience of having two full bathrooms and one half
- Split heating/air conditioning throughout
- Lift access to underground parking with a large storage cage

Price: \$775,000
Council Rates: \$1,151.00/year (approx)
Water Rates: \$168.00 p/q
Strata Rates: \$1,103.00 p/q

Adam McMahon

Adam McMahon

02 4267 5377



Plans shown are for presentation purposes and are not part of any legal document or title and are subject to errors, omissions, inaccuracies and should not be used as sole and accurate reference. Particulars given are for general information only and do not constitute any representation on the part of the vendor or agent. No liability will be accepted.