

8/2-4 Liddle Street Woonona, NSW



3



2



2

Convenience At Your Doorstep

A haven of privacy, space and tranquillity, this large townhouse offers an effortless contemporary lifestyle. Enviably proximate, located only a short walk to vibrant village eateries & amenities including schools, transport with a short drive to Woonona beach & freeway access to Sydney.

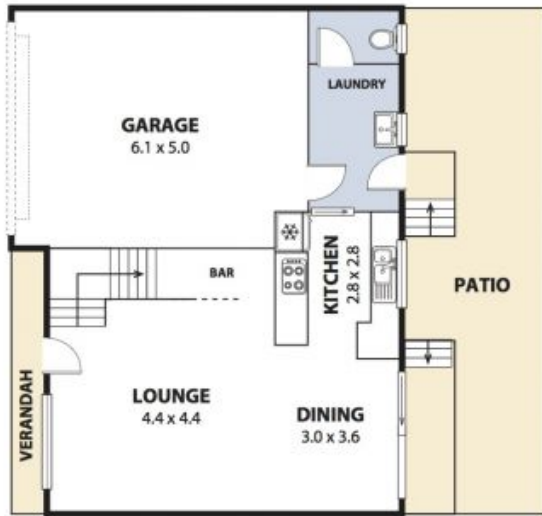
- Featuring fresh & versatile open plan living & dining area
- Flows to a private courtyard with paved area to entertain
- Sleek interiors including tiled flooring, high ceilings & feature walls
- Large kitchen and breakfast bar with ample cupboard storage
- Extra toilet down stairs for visiting guests, added bar space under the stairs
- Upstairs accommodates 3 oversized bedrooms with built-in wardrobes
- Master room with walk-in robe & ensuite
- Main bathroom includes bath and shower

Price: \$700,000
Council Rates: \$357.00 p/q
Water Rates: \$270.00 p/q
Strata Rates: \$457.00 p/q

Adam McMahon

Adam McMahon

02 4267 5377



Plans shown are for presentation purposes and are not part of any legal document or title and are subject to errors, omissions, inaccuracies and should not be used as sole and accurate reference. Particulars given are for general information only and do not constitute any representation on the part of the vendor or agent. No liability will be accepted.