



8/2-4 Liddle Street Woonona, NSW



PRIVACY, SPACE & TRANQUILLITY

Spacious townhouse offering an effortless contemporary lifestyle. Enviably proximity, located only a short walk to vibrant village eateries & amenities including schools, transport with a short drive to Woonona beach & freeway access to Sydney.

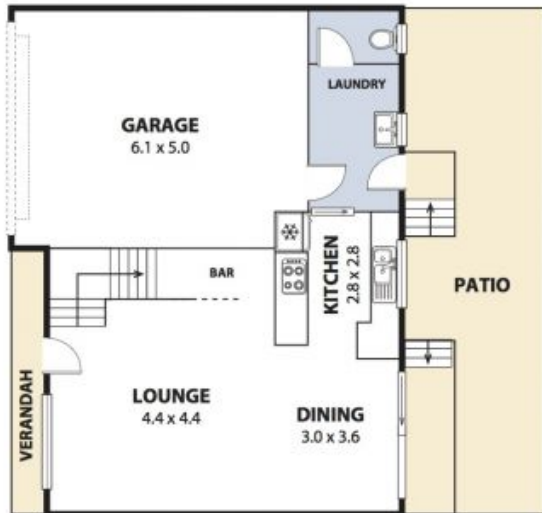
Price: \$550

Available Date: 2020-08-20

Features include:

- Fresh & versatile open plan living & dining area
- Private courtyard with paved area to entertain
- Sleek interiors including tiled flooring, high ceilings & feature walls
- Renovated large kitchen and breakfast bar with ample cupboard storage
- Extra toilet downstairs for visiting guests, added bar space under the stairs
- Upstairs accommodates three oversized bedrooms with built-in wardrobes
- Master bedroom with walk-in robe & ensuite
- Refreshed bathrooms, main includes bath and shower

Sue English



Plans shown are for presentation purposes and are not part of any legal document or title and are subject to errors, omissions, inaccuracies and should not be used as sole and accurate reference. Particulars given are for general information only and do not constitute any representation on the part of the vendor or agent. No liability will be accepted.