



13 Gifford Street Coledale, NSW



Near-New Stylish Family Home

Just 6 years young, this architecturally designed family home offers a modern open plan layout with a stylish edge. Set amongst a leafy backdrop in an elevated cul-de-sac, this remarkable residence boasts 4 bedrooms, 2 bathrooms and an additional study. Positioned in a magnificent location, this unique home is walking distance to the spectacular northern beaches, clubs, cafes, transport and a highly regarded public school. This home represents comfortable yet contemporary living on approx. 857m² block that can be enjoyed by the whole family.

Property Features:

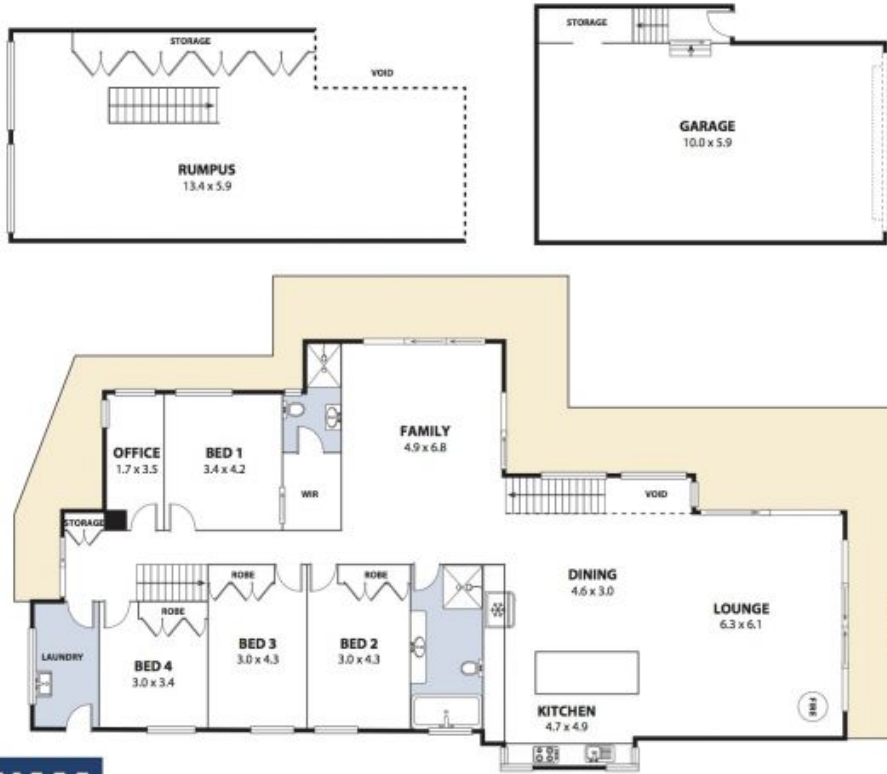
- 4 well-appointed bedrooms equipped with built-ins, the master with private ensuite.
- An additional study with custom built desks create an instant home office.
- The luxurious family bathroom will have you feel like you've just stepped into a day spa with jetted bath tub, walk in shower and stone bench tops.
- Soaring high ceilings are complimented with glass sliders and panelling to create a light and airy feel.
- Ducted air-conditioning and striking timber flooring throughout.

Price: \$1,700,000

Matt Dignam

Matt Dignam

02 4267 5377



Plans shown are for presentation purposes and are not part of any legal document or title and are subject to errors, omissions, inaccuracies and should not be used as sole and accurate reference. Particulars given are for general information only and do not constitute any representation on the part of the vendor or agent. No liability will be accepted.