



155 Princes Highway Bulli, NSW



4



1

BE SURPRISED. STYLISH. VERSATILE. CONVENIENT. FAMILY HOME IN BULLI

If you're looking for a home to move in or rent out this summer, this modern abode will tick all the boxes. Centrally located and having recently undergone a stylish transformation, this home is move-in ready appealing to first home buyers, investors and those looking for space to work from home.

Location

Occupying a prime position in the heart of Bulli, this immaculate residence is walking distance to a variety of amenities including the village, Bulli Public School and train station.

Just moments away from some of the most spectacular beaches in the region, take your pick from Bulli Beach, McCauley's Beach or Sandon Point for a quick swim in the surf or a morning jog on the sand.

For the avid foodie, this is the ultimate culinary destination! For fabulous fresh produce, the iconic Bulli Fruit and Deli is just down the road. Or taste some local treats while

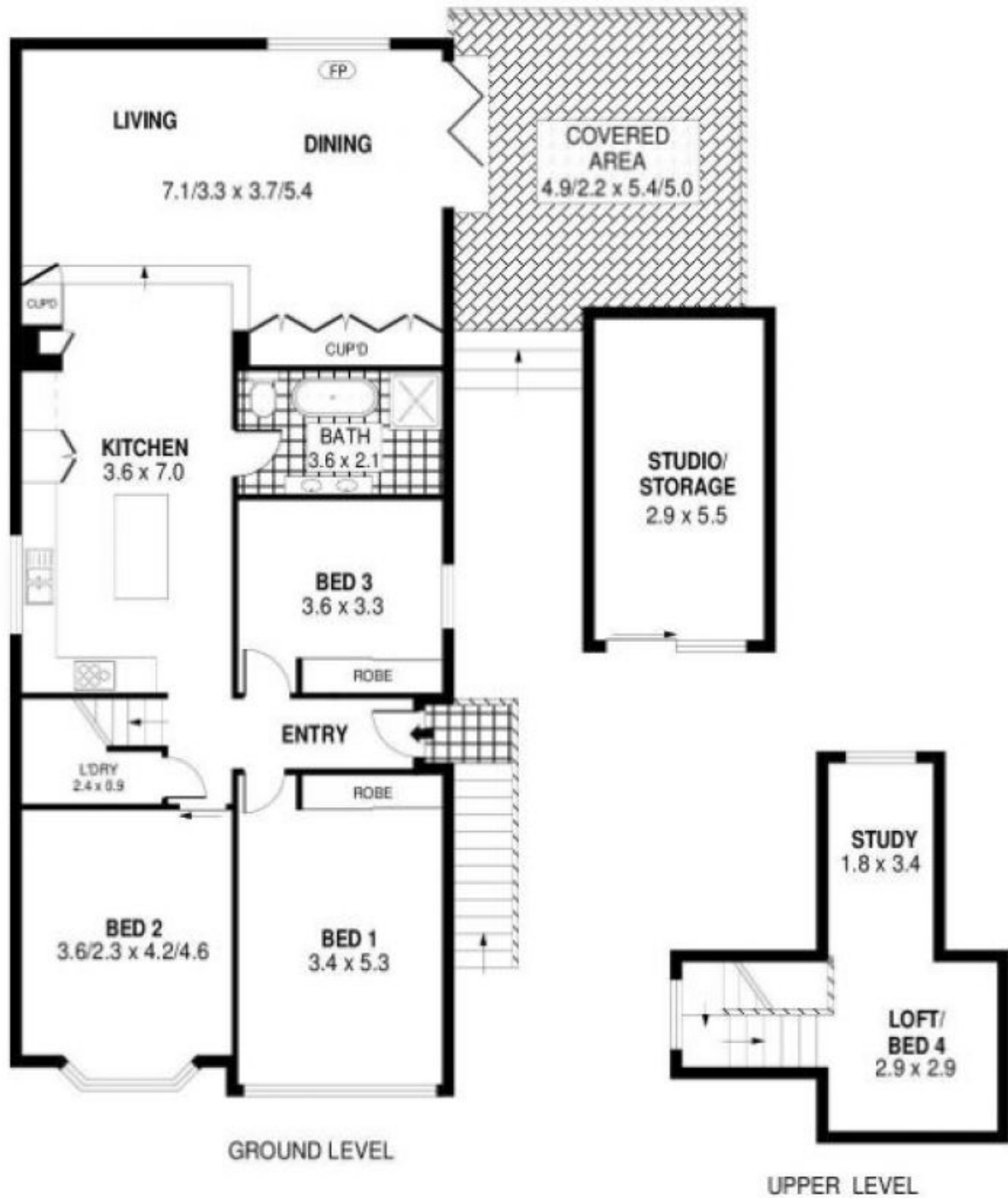
Price: \$735,000

Council Rates: \$465.00 p/q

Adam McMahon

Matt Dignam

02 4267 5377



0 1 2 3 4 5 **SCALE (METRES)**

PLANS SHOWN ONLY INDICATIVE OF LAYOUT. DIMENSIONS ARE APPROXIMATE.
 Ref. No: 01112

INT : 145m²
 EXT : 25m²
 STUDIO/STORAGE : 16m²

155 PRINCES HIGHWAY

BULLI