



21/118-124 Princes Highway Fairy Meadow, NSW



## URBAN DREAM

Be wowed by stunning views from this ultra-sleek and stylish apartment located in the heart of Fairy Meadow.

### LOCATION

Stunningly appointed, this apartment is part of a complex that is the jewel in the crown of the Ambience building in Fairy Meadow. Made up of only a few luxury apartments, you'll love living in the vibrant lifestyle building complete with shops and cafe's.

This premium property takes in breathtaking vistas of the ocean and the escarpment, visible from huge sliding doors in the living/kitchen area.

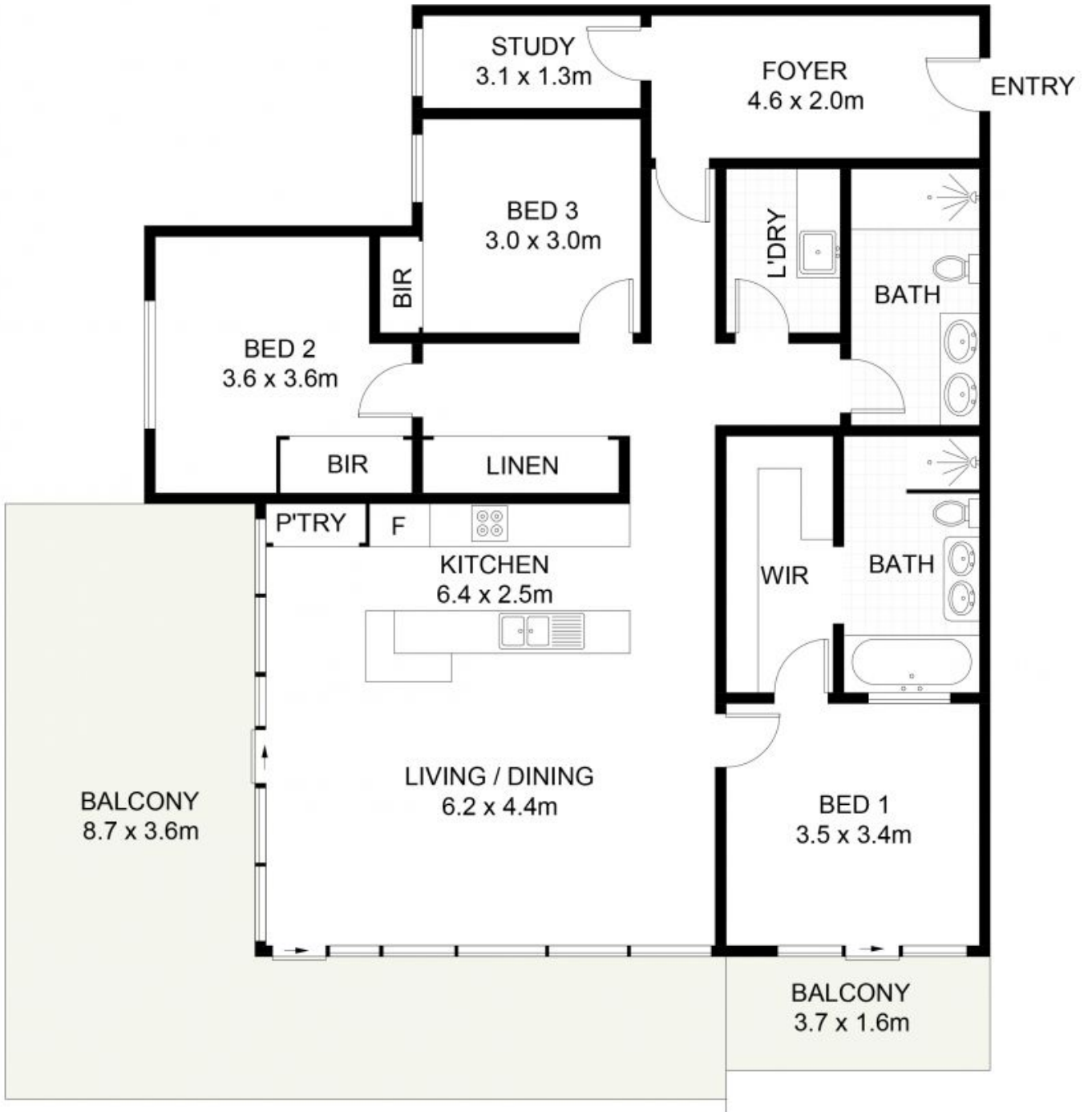
A far-reaching public transport network lies at your feet, with bus stops north and south right downstairs and the train station within walking distance making Wollongong's CBD mere moments away and giving you access to Sydney in 90 minutes. For families, premier local schools are within walk

**Price:** \$800,000  
**Council Rates:** \$331.86 p/q  
**Water Rates:** \$175.70 p/q  
**Strata Rates:** \$1,551.45 p/q

**Adam McMahon**

**Adam McMahon**

02 4267 5377



## 21/118-124 Princes Highway, Fairy Meadow

Scale in metres. Indicative only. Dimensions are approximate. All information contained herein is gathered from sources we believe to be reliable. However, we cannot guarantee its accuracy and interested persons should rely on their own enquiries.