



35 Brotheridge Avenue Calderwood, NSW



## BRAND NEW TRI-LEVEL HOME

Perfectly situated in the popular Calderwood Estate with beautiful escarpment views, this brand new tri-level home boasts modern conveniences throughout including plantation shutters and high end appliances.

Features include:

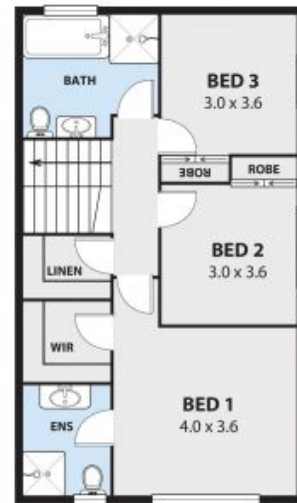
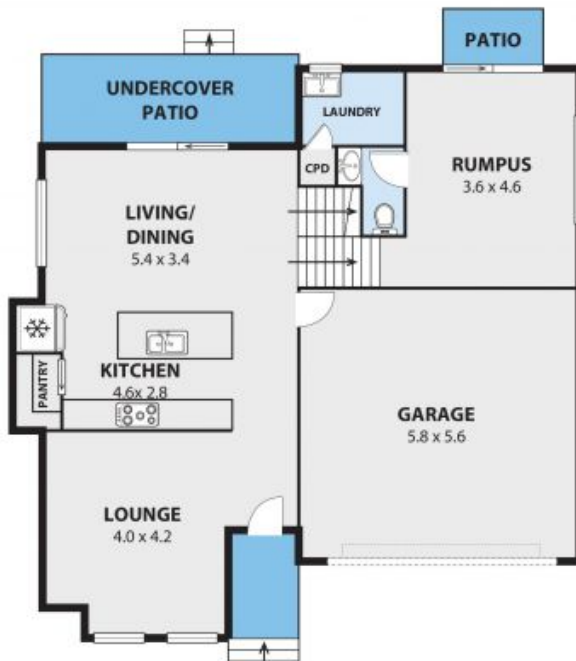
- Three bedrooms with ceiling fans, carpet, master with walk-in-robe and ensuite
- Open plan kitchen/dining with walk-in-pantry, gas cooktop, microwave, dishwasher and plumbed fridge space
- Light filled lounge room and downstairs rumpus room
- Additional powder room and walk-in-linen press
- Double lock up garage
- Spacious private yard
- Only moments to the local shops, 12 minutes to Shellharbor Village and 20 minutes to Wollongong CBD
- Parkland, bike tracks and education precinct nearby

**Price:** \$550 pw

**Available Date:** 2020-06-22

**Dignam Real Estate**

**Property Management**



35 BROTHERIDGE AVE, CALDERWOOD  
Internal Space 185m<sup>2</sup>



Plans shown are for presentation purposes and are not part of any legal document or title and are subject to errors, omissions, inaccuracies and should not be used as sole and accurate reference. Particulars given are for general information only and do not constitute any representation on the part of the vendor or agent. No liability will be accepted. AIR2.NET.AU

AIR2