



63 Mount Ousley Road Mount Ousley, NSW



3



2



2

## GARDEN PARADISE

Set back from the road and exuding a classic charm, this circa 1958 brick home sits on a huge 835m<sup>2</sup> (approx.) block with a hidden garden paradise in the backyard. Offering untapped potential to renovate or extend ? just apply your own creativity and flair to bring this distinctive residence into the modern era!

**Price:** \$740,000  
**Council Rates:** \$489.88 p/q

### LOCATION

Perched on the northern fringe of the Wollongong CBD, Mount Ousley is popular with families at all stages of life who love the proximity to multiple public and private schools, University and TAFE.

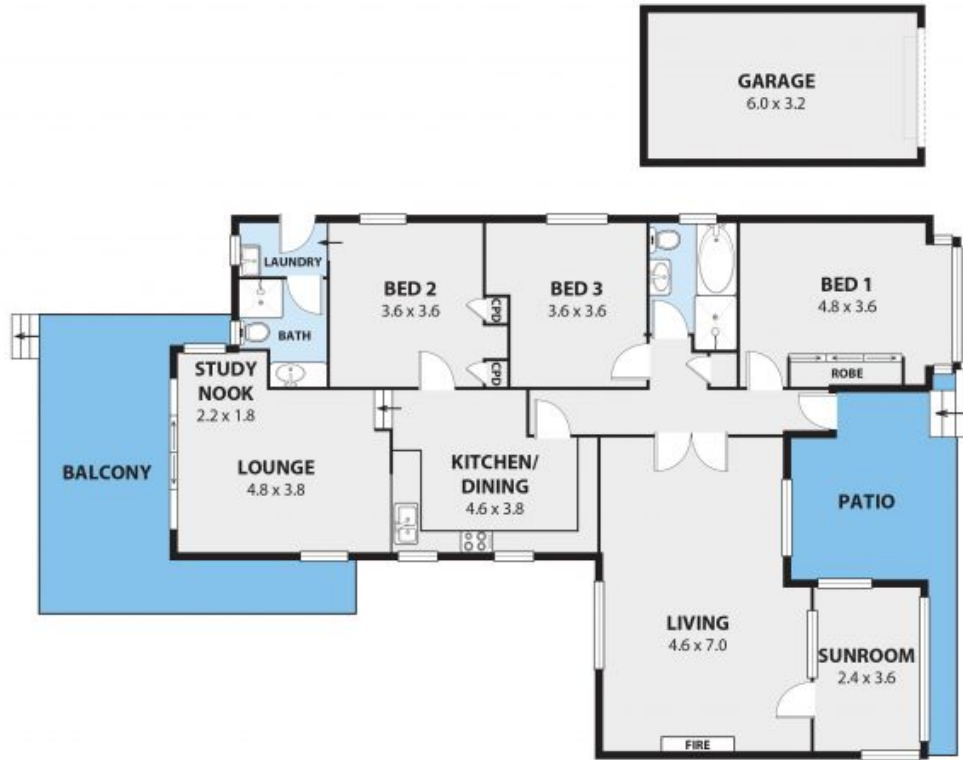
A leafy pocket, Mount Ousley is also home to abundant parks, reserves and playing fields and is only minutes to the Wollongong Botanic Gardens, spectacular beaches and beautiful harbour.

The Wollongong CBD is brimming with all the essentials you need for work or play, including major retail outlets,

**Adam McMahon**

**Adam McMahon**

02 4267 5377



63 MT OUSLEY RD, MT OUSLEY  
Internal Space 135m<sup>2</sup>



Plans shown are for presentation purposes and are not part of any legal document or title and are subject to errors, omissions, inaccuracies and should not be used as sole and accurate reference. Particulars given are for general information only and do not constitute any representation on the part of the vendor or agent. No liability will be accepted. AR2, MET, A9

AR2