



1/20 Horsley Drive Horsley, NSW



3



1



1

PRIVATE & CONVENIENT VILLA

Positioned well back from the road and with only one adjoining neighbour, this single-level villa enjoys a peaceful and private ambiance. Suitable for starters, downsizers and investors, this is a fantastic opportunity to purchase in a vibrant community.

Price: \$500,000

Council Rates: \$364.30 p/q

LOCATION

Horsley is a unique family-friendly village in a semi-rural setting. Moments to the scenic shores of Lake Illawarra, here you can spend hours exploring the waters in a kayak, or try your luck catching some fish.

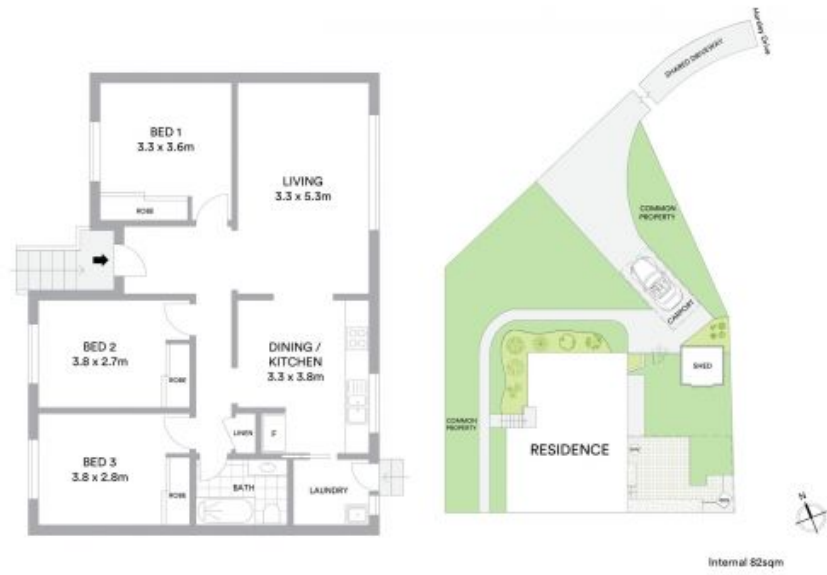
PROPERTY

Tucked away from the ma

Adam McMahon

Adam McMahon

02 4267 5377



Scale in metres, indicative only. All information contained herein is obtained from sources we believe to be accurate. We cannot guarantee its accuracy. Interested persons should make and rely on their own enquiries.