

34 Payne Road East Corrimal, NSW



5



3



2

FAMILY BLISS, MINUTES TO EAST CORRIMAL BEACH

Situated in an exclusive East Corrimal enclave, this family haven has undergone a stylish renovation and is ready to welcome you. Flawlessly presented, a picturesque beach lifestyle awaits the next lucky owners.

Location

Walking distance to everything you need, living in East Corrimal doesn't get any easier than this! A 700m stroll is all that separates you from the water's edge. Explore Bellambi Lagoon, Corrimal Beach and Towradgi Rock Pool within a quick walk from your home, or ride your bike along the Illawarra cycleway to discover more of the sensational beaches that Illawarra has to offer.

...

Property...

Tropical palms and lush landscaped gardens instantly make you feel relaxed the moment you arrive at this sprawling family home. Unfolding over 2 levels, the lower level has been ca

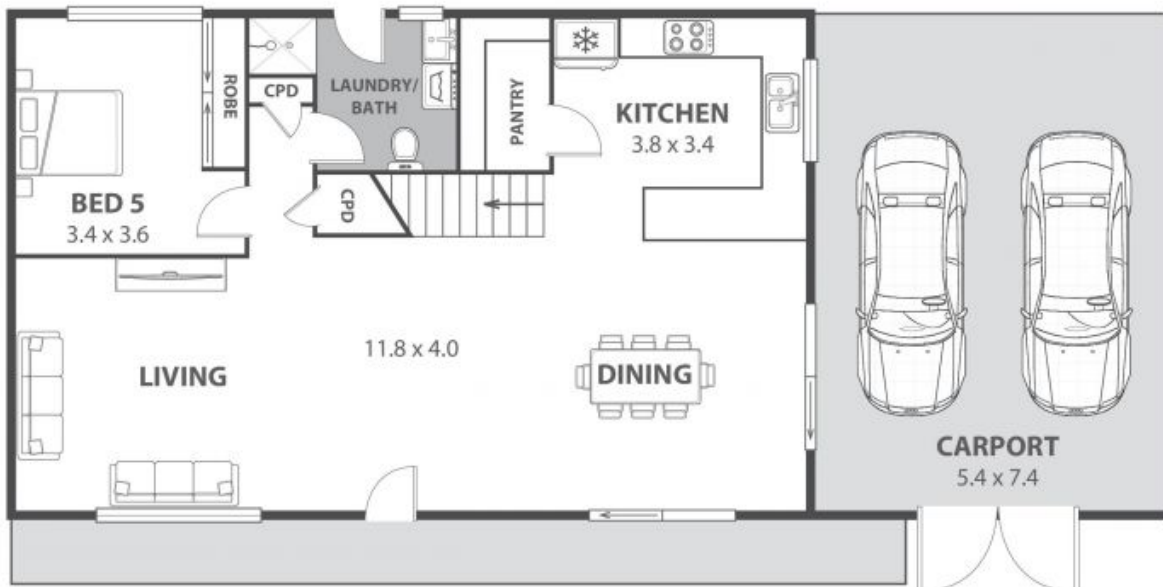
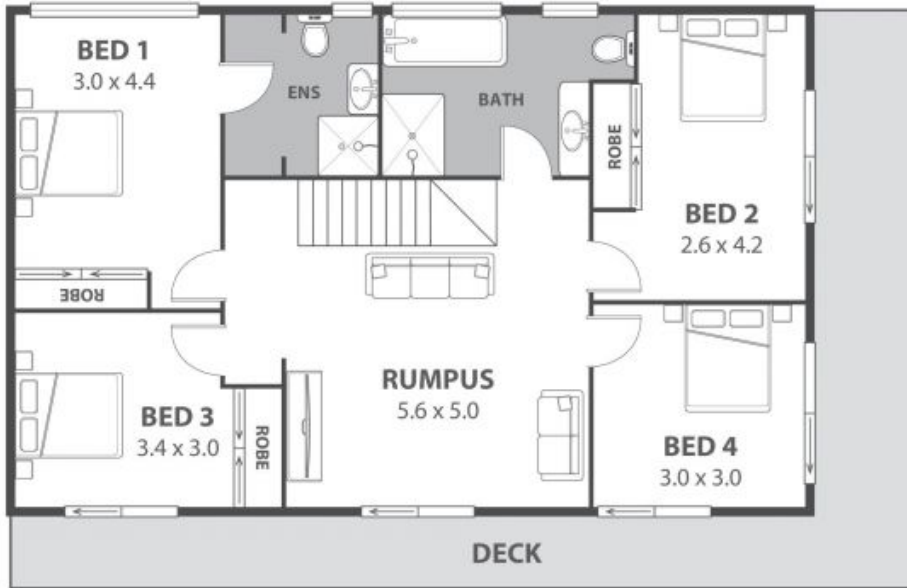
Price: \$1,250,000

Council Rates: \$538.37 p/q

Adam McMahon

Ethan Hennessy

02 4267 5377



34 Payne Road, East Corrimal

Internal Space 189m²



Plans shown are for presentation purposes and are not part of any legal document in force and are subject to errors, omissions, inaccuracies and should not be used as sole and accurate reference. Particulars given are for general information only and do not constitute any representation on the part of the vendor or agent. No liability will be accepted.