



6/13 Rann Street Fairy Meadow, NSW



2



1



1

## ATTENTION FIRST HOME BUYERS & INVESTORS

Walk to town and stroll to beaches! This solid brick unit is a fantastic find, positioned on the top floor of a well-maintained and convenient Fairy Meadow complex.

### Location

Walking distance to world-class beaches, the location of this unit doesn't get any better than this! Choose from Puckey's, Fairy Meadow and Towradgi Beach for your morning swim or surf, all within 1-km (approx) from your door.

For those who seek an active, outdoor lifestyle, Thomas Dalton Park is home to playing fields and green spaces suitable for the fitness fanatic, or go for a ride along the Illawarra cycleway which serves up an exquisite ocean backdrop.

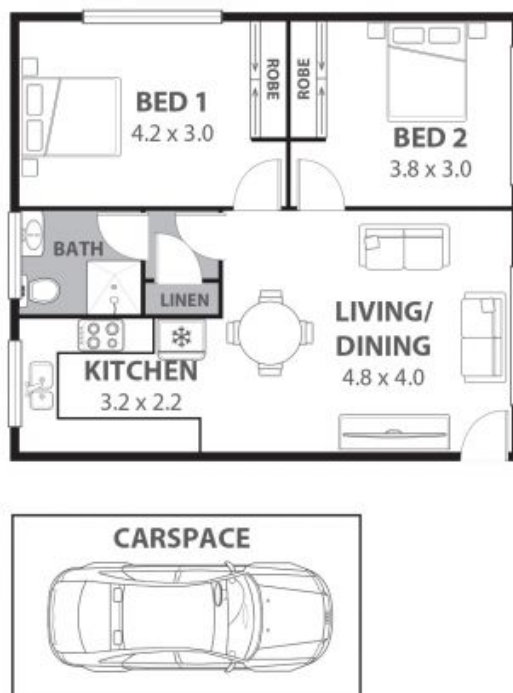
Located on the northern fringe of Wollongong, it's only a 5-minute drive into the Wollongong Central Business District. Or catch the train from Fairy Meadow station which also has links to the Sydney CBD

**Price:** \$445,000  
**Council Rates:** \$334.30 p/q  
**Water Rates:** \$145.71 p/q  
**Strata Rates:** \$609.90 p/q

**Adam McMahon**

**Ethan Hennessy**

02 4267 5377



## 613 Rann Street Fairy, Meadow

Internal Space 48m<sup>2</sup>



Plans shown are for presentation purposes and are not part of any legal document as title and are subject to error, omissions, inaccuracies and should not be used as sole and accurate reference. Particulars given are for general information only and do not constitute any representation on the part of the vendor or agent. No liability will be accepted.