



16/61 Keira Street Wollongong, NSW



2



2



1

LIGHT-FILLED WOLLONGONG PAD WITH NORTH-FACING ASPECT

Due to current covid restrictions, there will be no 'open homes'. Please contact our office on 4267 5377 to arrange your private inspection by appointment.

Price: \$740,000
Council Rates: \$390.00 p/q
Strata Rates: \$824.35 p/q

Presenting like new, this high quality apartment resides on the 4th floor of the sought after 'Beleira' complex and offers an unrivalled coastal lifestyle, a short walk to the harbour, cafes and beaches!

Location

For those who require a commute, the train station is nearby with connections to Sydney whilst the drive to the Sydney CBD will take approximately 90-minutes.

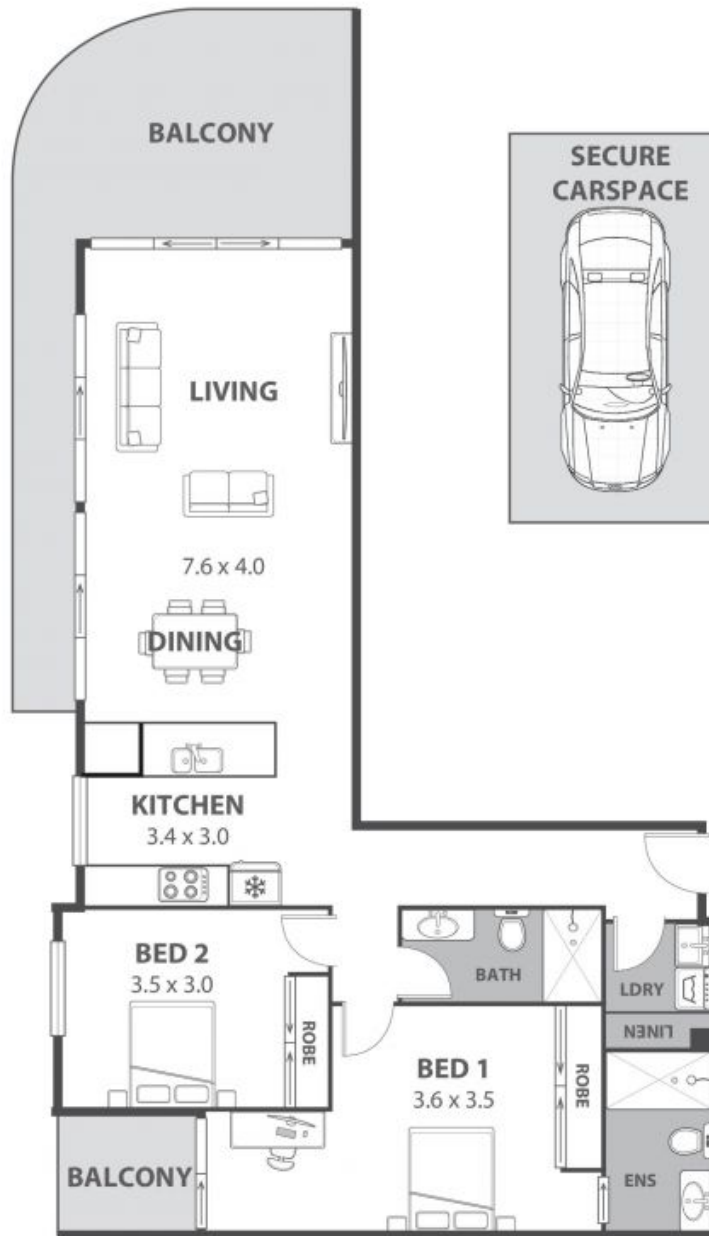
Property

Finished in a chic modern palette, spacious open plan interiors welcome you inside the apa

Adam McMahon

Ethan Hennessy

02 4267 5377



16/61 Keira Street, Wollongong

Internal Space 91m²



Plans shown are for presentation purposes and are not part of any legal document in force and are subject to errors, omissions, inaccuracies and should not be used as sole and accurate reference. Particulars given are for general information only and do not constitute any representation on the part of the vendor or agent. No liability will be accepted.