



143 Princes Highway Bulli, NSW

4 1 2

BIG FAMILY HOME ON A BIG BLOCK IN THE HEART OF BULLI

Due to current covid restrictions, there will be no 'open homes'. Please contact our office on 4267 5377 to arrange your private inspection by appointment.

Price: \$1,100,000
Council Rates: \$450.00 p/q
Water Rates: \$300.00 p/q

Occupying a large block in the heart of Bulli, the family will love the ultra-convenience of this abode that is only a stroll to town, stunning beaches and local schools.

Location

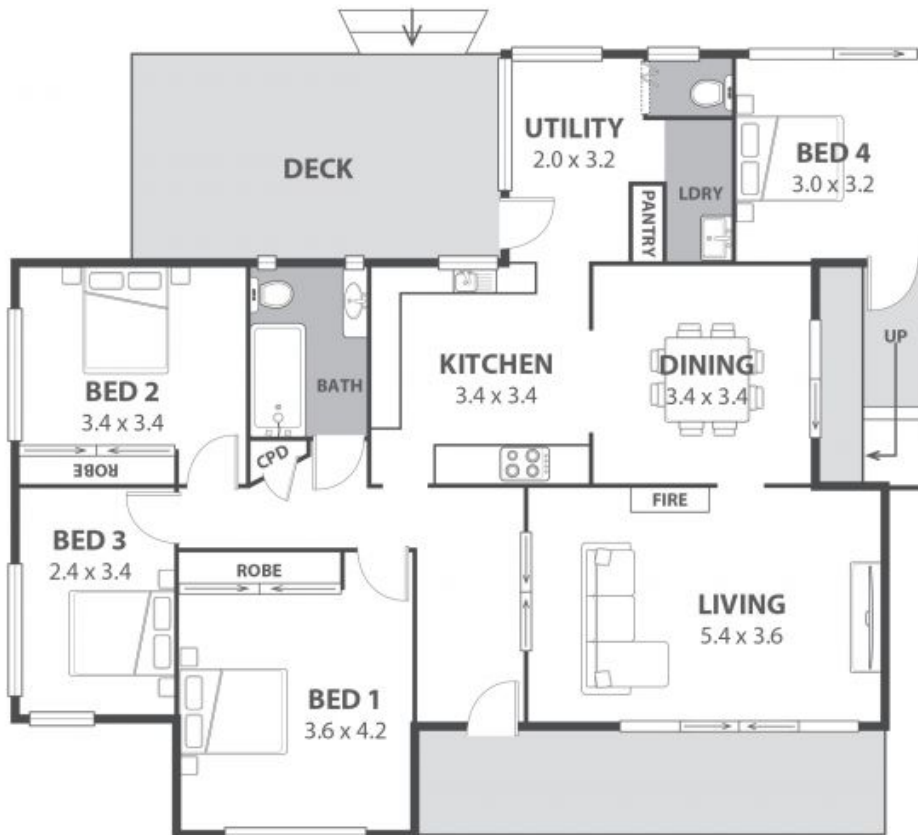
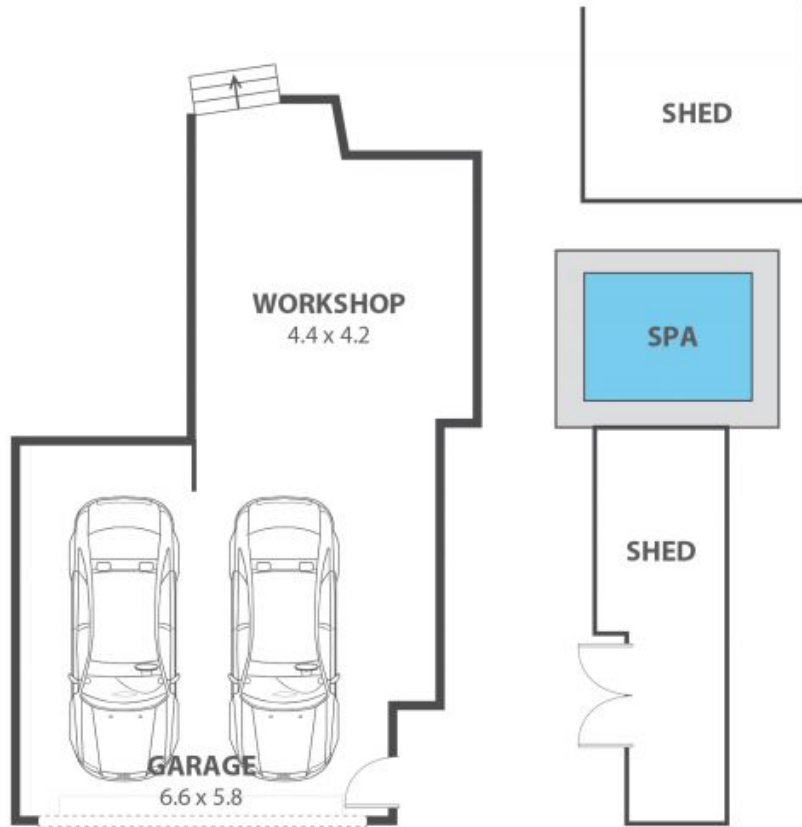
The choice of beaches to choose from within a meander of your door are endless, discover the sparkling shores of McCauley's, Sandon Point and Thirroul Beach!

Perched on the Princes Highway, this accessible abode provides residents with instant highway access to Sydney and Wollongong and is walking distance to both Thirroul and Bulli Tra

Adam McMahon

Daniel Van Wijk

02 4267 5377



143 Princes Highway, Bulli

Internal Space 170m²



Plans shown are for presentation purposes and are not part of any legal document at this time and are subject to errors, omissions, inaccuracies and should not be used as sole and accurate reference. Particulars given are for general information only and do not constitute any representation on the part of the vendor or agent. No liability will be accepted.