

15 Gaynor Avenue Mount Ousley, NSW



3



2



2

RENOVATED FAMILY HOME WITH DUAL INCOME POTENTIAL

Renovated throughout, this single level cottage is a flexible family home or a smart addition to the investment portfolio. An extension at the rear of the property features a separate entry, kitchenette and bathroom offering adult children their own space, or dual income potential.

Price: \$1,020,000

Location

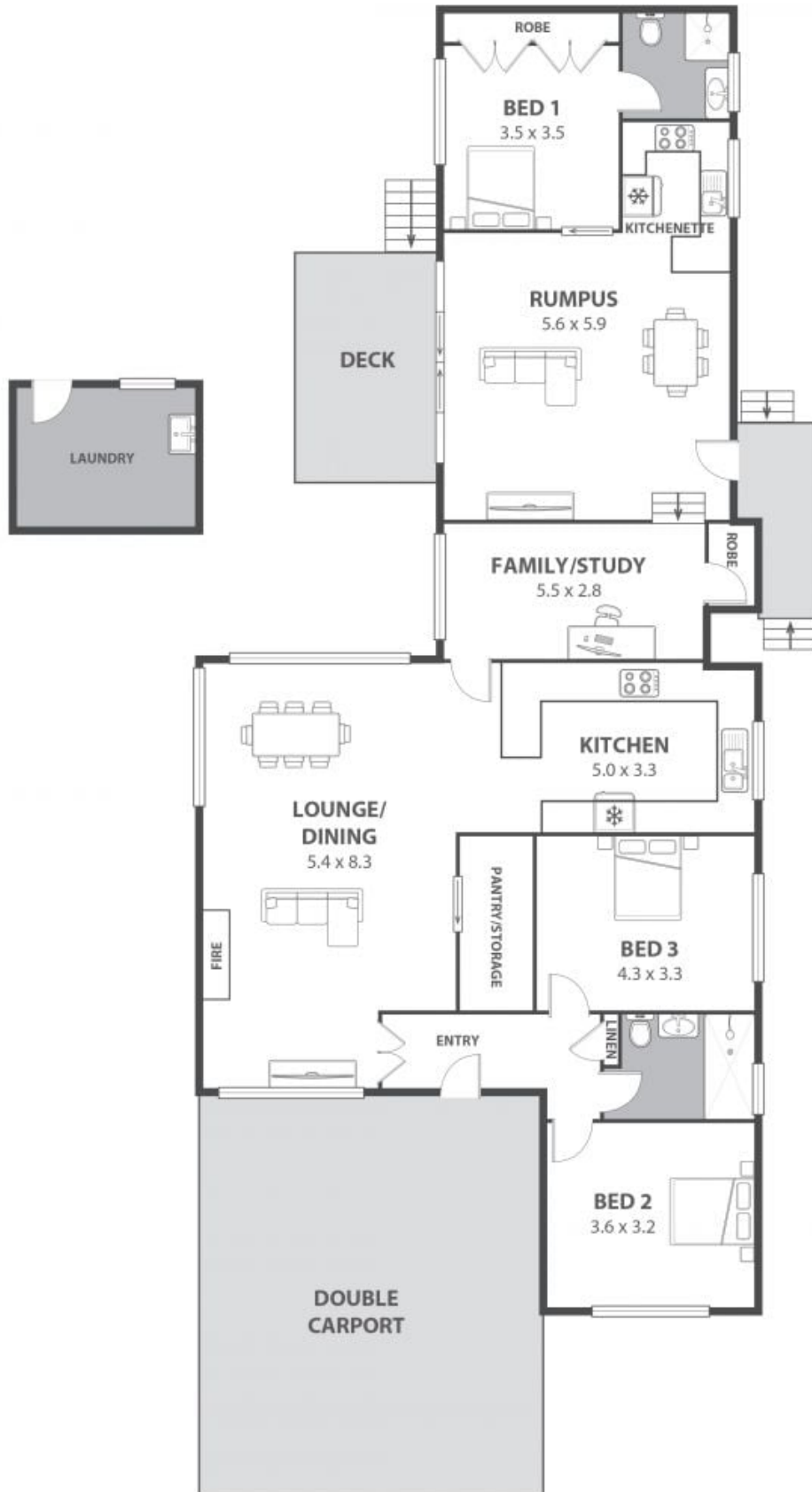
Nestled on the fringe of Wollongong this home lies in a quiet Mount Ousley pocket within walking distance to downtown Fairy Meadow and a 5-minute (approx) drive to the Wollongong CBD.

Located around the corner from the motorway entry, this position is ideal for those who are looking to commute to Sydney on a daily basis, with the trip taking approximately 90-minutes. Or sit back with a good book and take the train from Fairy Meadow or North Wollongong

Adam McMahon

Adam McMahon

02 4267 5377



15 Gaynor Avenue, Mount Ousley

Internal Space 189m²



Plans shown are for presentation purposes and are not part of any legal document in force and are subject to errors, omissions, inaccuracies and should not be used as sole and accurate reference. Particulars given are for general information only and do not constitute any representation on the part of the vendor or agent. No liability will be accepted.