

24 Stephen Drive Woonona, NSW



3



1



2

SECLUDED ESCARPMENT HIDEAWAY

Backing onto the stunning Illawarra Escarpment, a lifestyle of absolute peace and tranquility beckons! Only moments to Woonona's popular amenities, this is a secluded home appealing to retirees, families and investors alike.

Price: \$1,280,000
Council Rates: \$543.00 p/q
Water Rates: \$903.00/year (approx)

Location

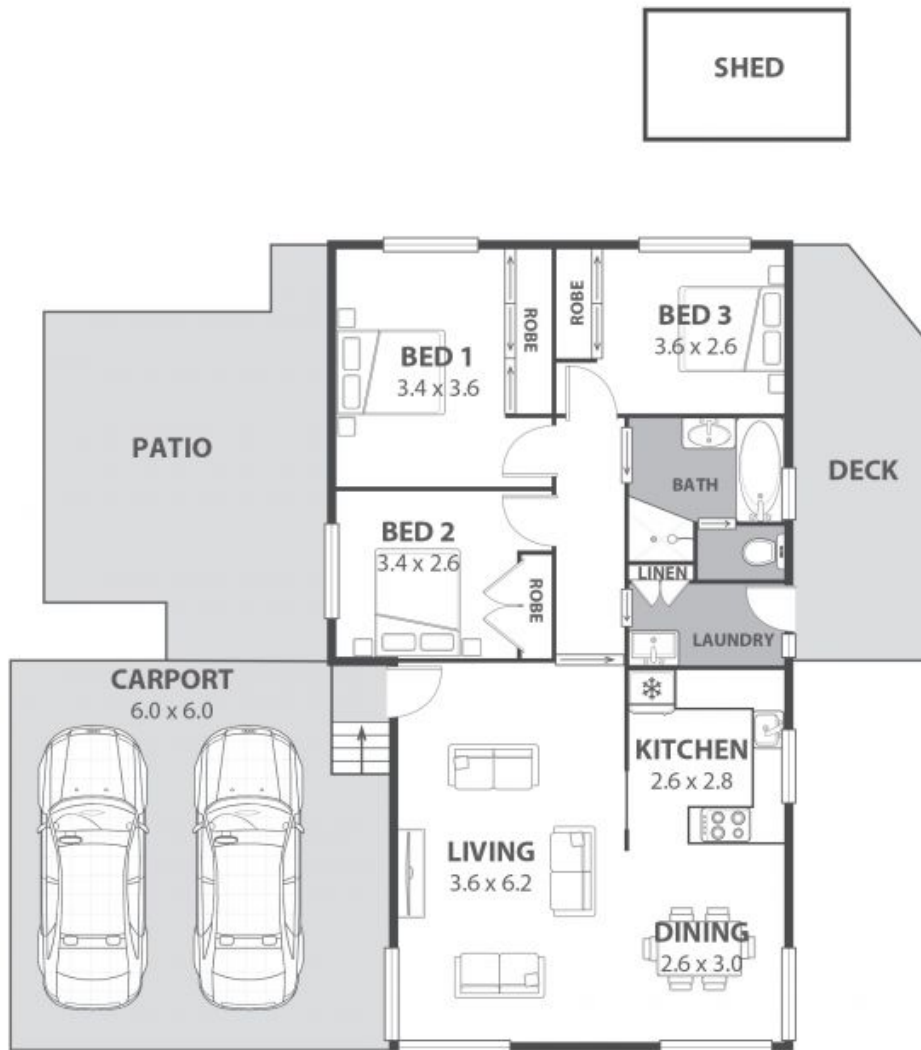
Perched towards the end of a leafy cul-de-sac, take a leisurely stroll down the hill to discover the charming village of Woonona, bursting with cafes, restaurants, services and supermarkets. Other major amenities nearby include the Woonona Bulli RSL, Woonona Public School, Woonona High School, Bulli Hospital and a variety of local clubs and sporting fields.

Property

Adam McMahon

Ethan Hennessy

02 4267 5377



24 Stephen Drive, Woonona

Internal Space 80m²



Plans shown are for presentation purposes and are not part of any legal document at this time and are subject to errors, omissions, inaccuracies and should not be used as sole and accurate reference. Particulars given are for general information only and do not constitute any representation on the part of the vendor or agent. No liability will be accepted.