



47 Lawrence Street Woonona, NSW



4



2



4

## SPACIOUS COASTAL COTTAGE ON A HUGE CORNER BLOCK

Occupying a large corner block in East Woonona, Bulli and Woonona beaches beckon from just footsteps away! Private and leafy, the home is a spacious retreat and makes a fantastic family home or investment property.

**Price:** Contact Agent

**Council Rates:** \$641.23 p/q

### Location

The iconic Bulli Beach Caf? is within walking distance, or meander into the township where you'll find an abundance of trendy cafes and eateries. The township is also home to supermarkets, retail outlets and services.

...

### Property...

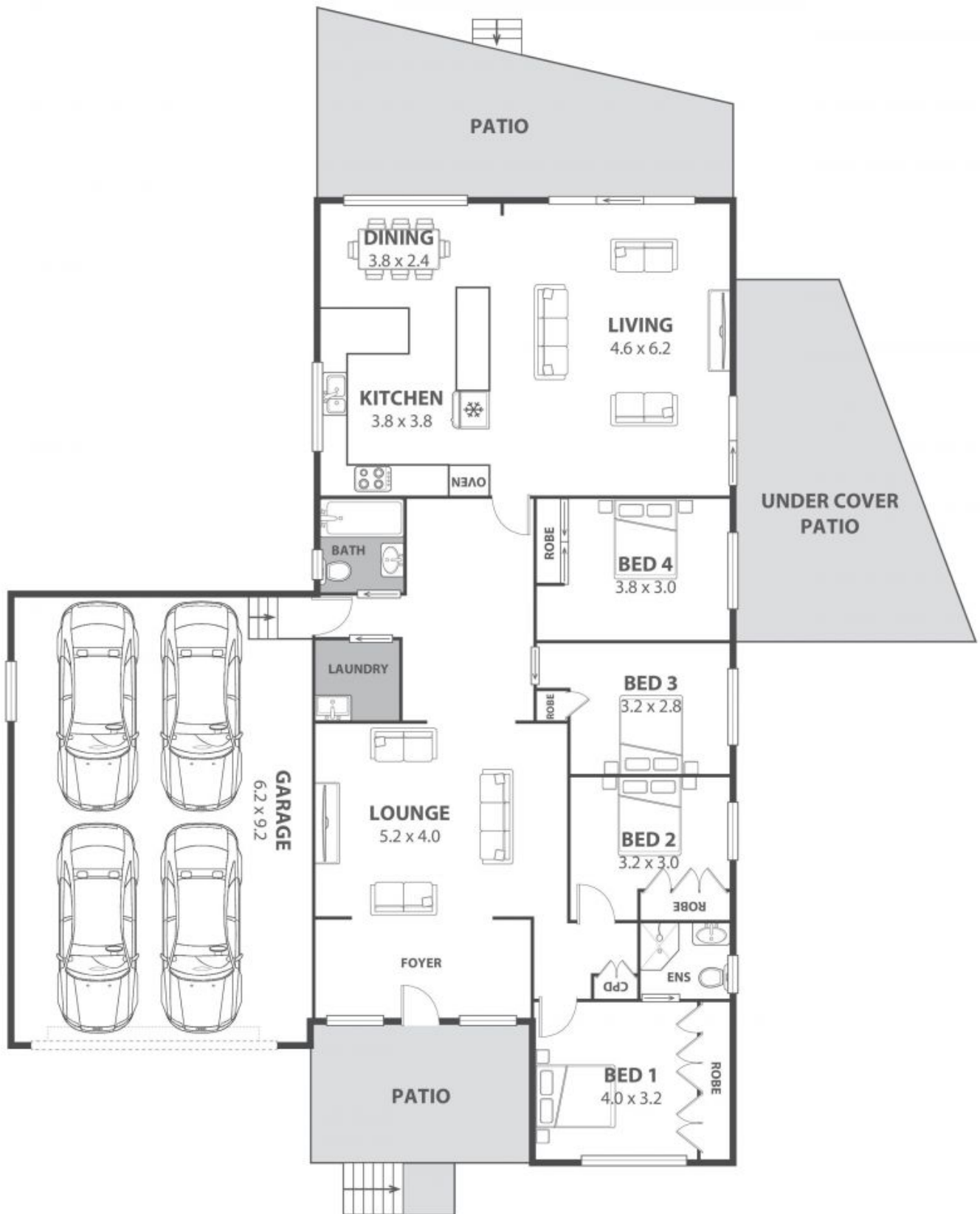
...

Sunlight filters through the oversized windows, flooding the kitchen, living and dining rooms in abundant light. Packed with loads of storage, the kitchen also features stainless steel appliances, gas cooking, an appliance nook and a dishwasher. A second lounge provides

**Adam McMahon**

**Ethan Hennessy**

02 4267 5377



**47 Lawrence Street, Woonona**

Internal Space 219m<sup>2</sup>



Plans shown are for presentation purposes and are not part of any legal document in title and are subject to errors, omissions, inaccuracies and should not be used as sole and accurate reference. Particulars given are for general information only and do not constitute any representation on the part of the vendor or agent. No liability will be accepted.