

15 Gaynor Avenue Mount Ousley, NSW



4



2



2

RENOVATED FAMILY HOME WITH GRANNY FLAT

The fluid layout of this residence ensures it is a stand out. Renovated throughout, this single level cottage is a flexible family home featuring a separate entry, kitchenette and bathroom ideal for an extended family, teenage retreat or even holiday visitors. Located in a family-friendly enclave, there are numerous education facilities within walking distance, stunning beaches, botanical gardens, playing fields and cycleways are also in easy reach.

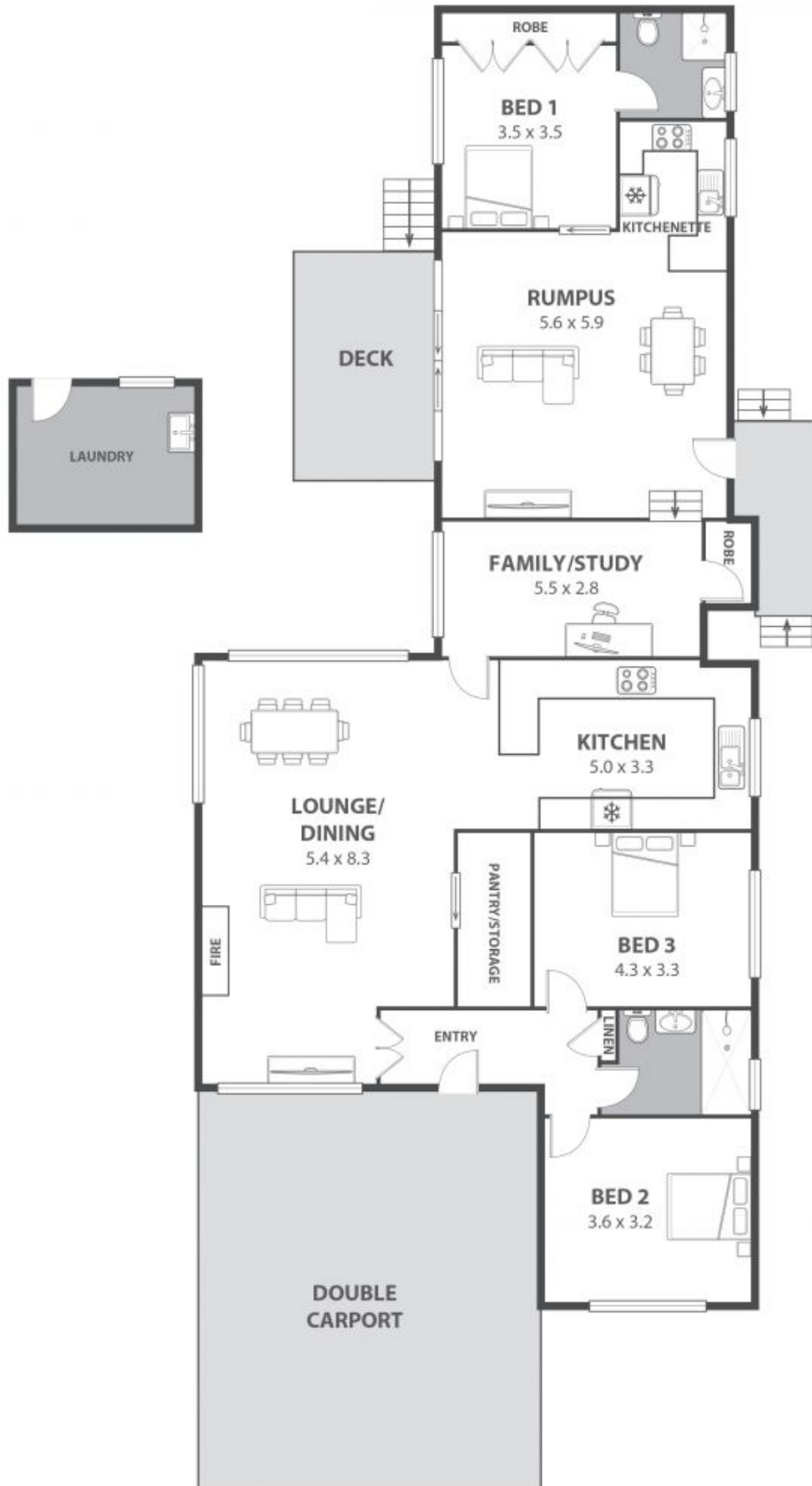
Features include:

- Single level residence finished in a crisp white palette, enhancing the scale of this coastal-inspired pad.
- Freshly painted interiors, cosy fireplace and extra high ceilings welcome you inside
- Oversized kitchen, bursting at the seams with inclusions, stone benchtops, tiled splashbacks, a walk-in storage/pantry, stainless steel oven and rangehood, oodles of cupboard space and gas cooking.
- Main residence boast additional room which would be ideal for a study, games room or extra bedroom
- Appreciating a separate entrance towards the rear is a self-contained flat incorporating a spacious rumpus and

Price: \$850 pw

Available Date: 2022-01-17

Sue English



15 Gaynor Avenue, Mount Ousley

Internal Space 189m²



Plans shown are for presentation purposes and are not part of any legal document as title and are subject to errors, omissions, inaccuracies and should not be used as sole and accurate reference. Particulars given are for general information only and do not constitute any representation on the part of the vendor or agent. No liability will be accepted.