



1/5 Myall Street Oatley, NSW



4



2



2

## SPRAWLING TOWNHOUSE IN A BOUTIQUE COMPLEX

Exuding a traditional charm, this picturesque townhouse delivers space, comfort and convenience. Recently updated and ready to welcome new inhabitants, this is a fantastic alternative to buying a home in a popular suburb.

**Price:** \$1,570,000  
**Council Rates:** \$363.00 p/q  
**Strata Rates:** \$690.00 p/q

### Location

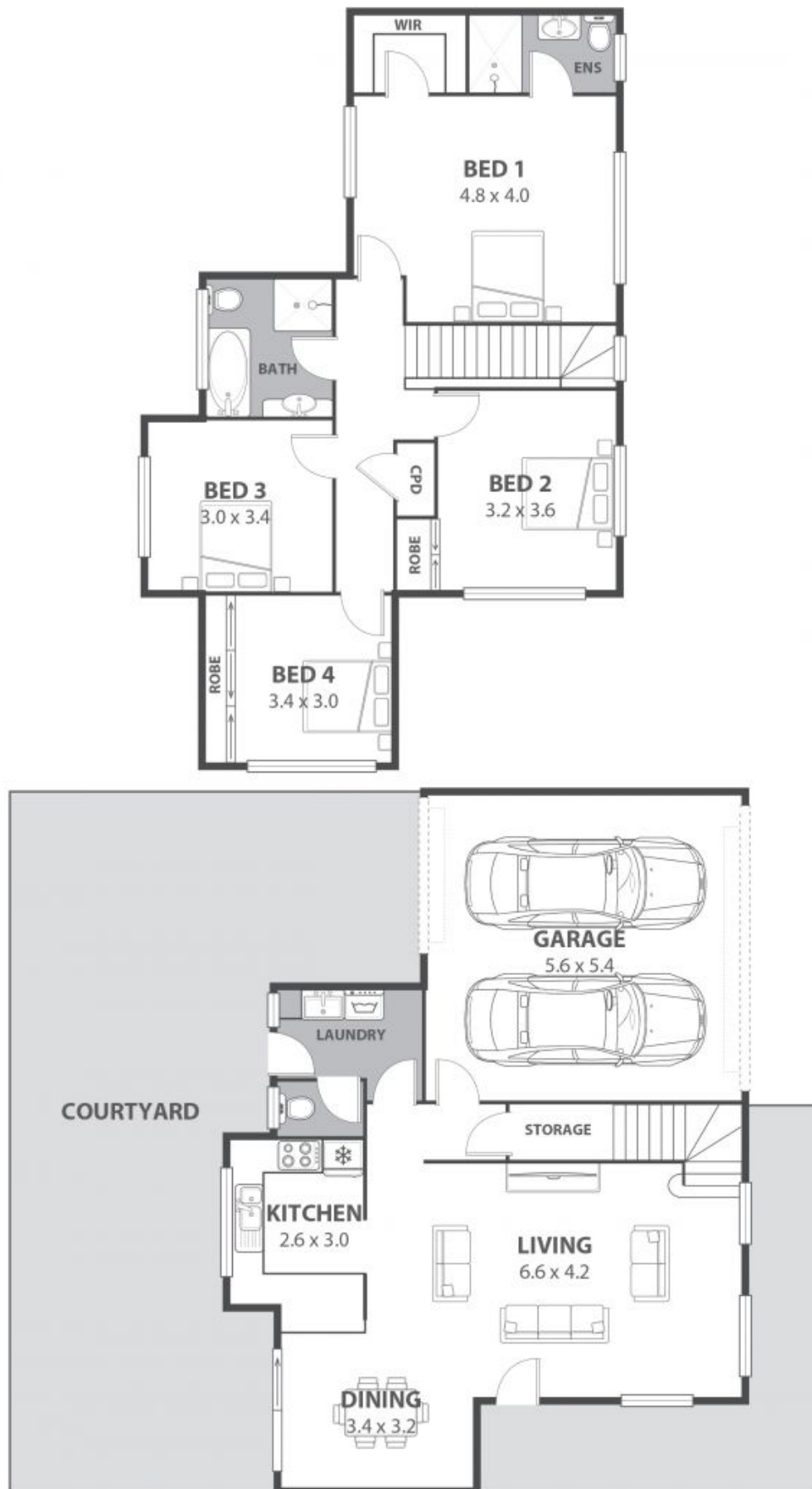
Perched on a leafy and extra-wide street, the townhouse rests at the front of a well-maintained complex alongside other high quality properties.

Approximately a 30-minute drive into the Sydney CBD, the area is serviced by local bus links and the Mortdale Train Station.

**Sue English**

**Adam McMahon**

02 4267 5377



**1/5 Myall Street, Oatley**

Internal Space 171m<sup>2</sup>



Plans shown are for presentation purposes and are not part of any legal document as title and are subject to errors, omissions, inaccuracies and should not be used as sole and accurate reference. Particulars given are for general information only and do not constitute any representation on the part of the vendor or agent. No liability will be accepted.