



1/14 Catherine Street Gwynneville, NSW

2 1 1

## Convenient village lifestyle

Taking pride of place at the front of a quiet boutique complex of just three dwellings, this spacious two-bedroom villa enjoys an easy-living floorplan.

### Location

Conveniently located in Wollongong's inner-city suburb of Gwynneville, this home offers a convenient, easy-going lifestyle with easy access to everything you could possibly need.

On sunny weekends, jump in the car and be relaxing on the sand at Wollongong Beach in just a few short minutes, or pack a picnic and head to Wollongong's beautiful botanic garden, just a two-minute drive from home. ...

...

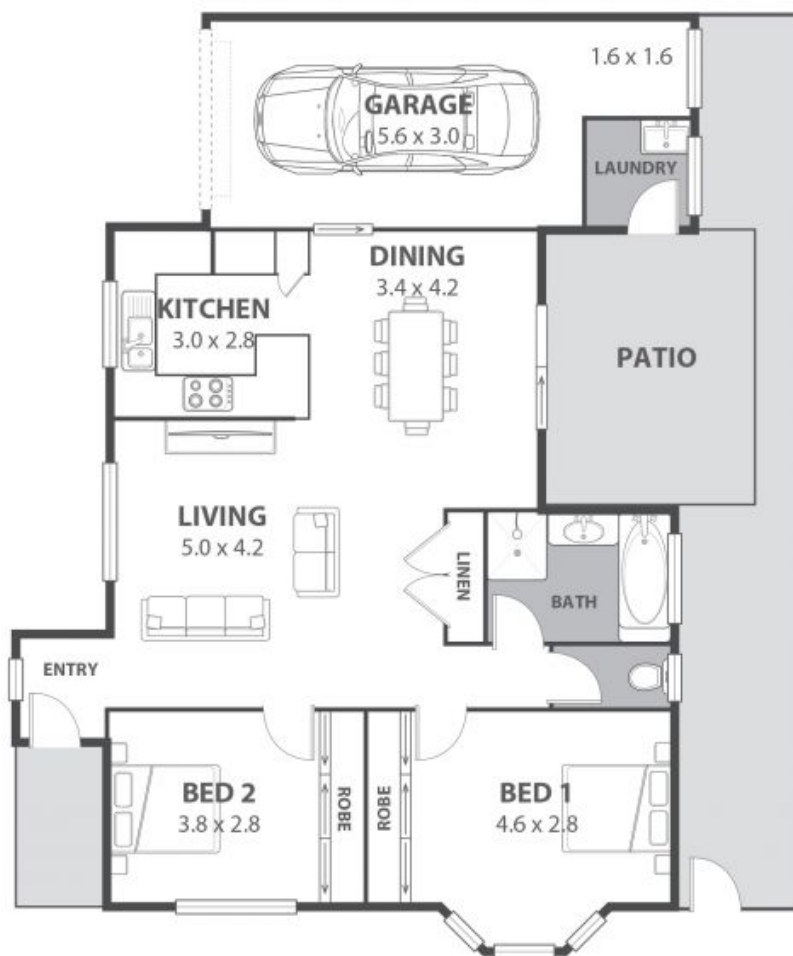
When it's time for a day in Sydney, you'll have an easy 1 hour 20-minute drive (approx.) from home, or a relaxing train ride direct from North Wollongong Station - just 750 metres (approx.) from your new

**Price:** Contact Agent  
**Council Rates:** \$357.70 p/q  
**Strata Rates:** \$821.00 p/q

**Adam McMahon**

**Adam McMahon**

02 4267 5377



**1/14 Catherine Street, Gwynneville**

Internal Space 100m<sup>2</sup>



Plans shown are for presentation purposes and are not part of any legal document as title and are subject to errors, omissions, inaccuracies and should not be used as sole and accurate reference. Particulars given are for general information only and do not constitute any representation on the part of the vendor or agent. No liability will be accepted.