

36 Stewards Drive Kembla Grange, NSW



5



2



2

Five bedrooms and escarpment views!

Located in the sought-after Kembla Grange Estate on a huge 540sqm corner block, this sleek and spacious five-bedroom home offers loads of room to move. Just minutes from shops, schools and public transport and a short drive to all the conveniences of Wollongong, this home will appeal to growing families and astute investors alike.

Location

Dapto Public School and Dapto High School are both just minutes away, while Dapto's town centre is just a seven-minute drive from home, offering cafes, eateries, and the convenience of both Coles and Aldi, ensuring you'll always have everything you need for school lunchboxes and after school snacks!...

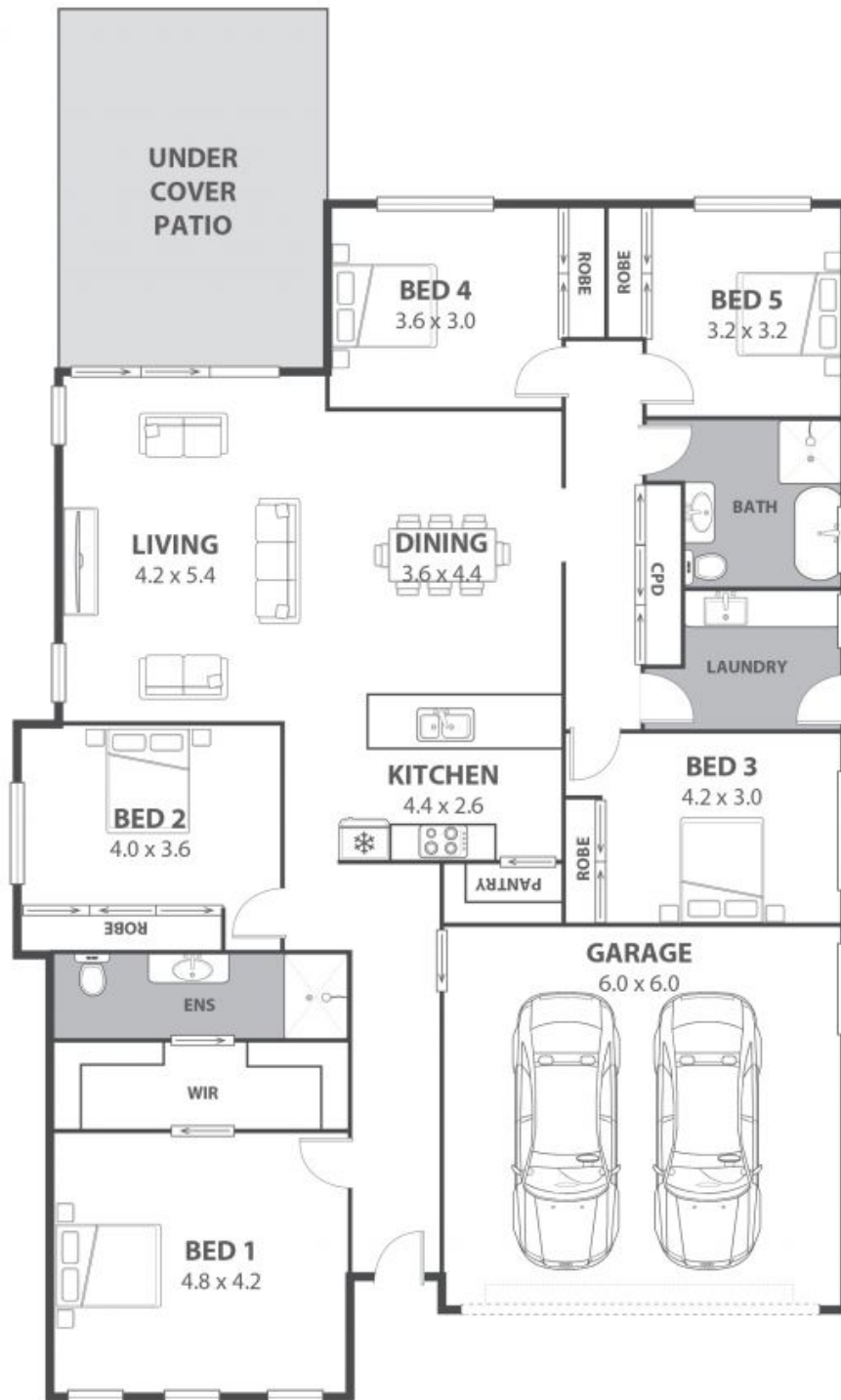
With easy freeway access, the commute to Sydney is a 90-minute drive (approx.), or catch the train at nearby Dapto Station for the direct journey? take a good book and just sit back and enjoy the ride. Closer by, Wollongong provides all the conveniences of a big city just 18 minutes away (approx.). The whole family will love its vast range of dining, shopping and entertainment options, as well as its breathtaking botanic gardens? the perfect spot for a weekend picnic

Price: \$1,175,000
Council Rates: \$482.78 p/q

Ethan Hennessy

Ethan Hennessy

02 4267 5377



36 Stewards Drive, Kembla Grange

Internal Space 212m²



Plans shown are for presentation purposes and are not part of any legal document at this time and are subject to errors, omissions, inaccuracies and should not be used as sole and accurate reference. Particulars given are for general information only and do not constitute any representation on the part of the vendor or agent. No liability will be accepted.