



16 Gore Avenue Shell Cove, NSW



4



2



2

## Idyllic family living in Shell Cove

Ideally located in sought-after Shell Cove, this elegant four-bedroom family home offers an easy-going family lifestyle with easy access to shops, schools, beaches, and leisure activities.

### Location

This fabulous location in community-minded Shell Cove offers a wonderful family lifestyle.

You'll love having a choice of childcare options within walking distance of home and the seven-minute walk to Shell Cove Primary School (approx.), while for the older kids, Warilla High School is only a six-minute drive from home (approx.).

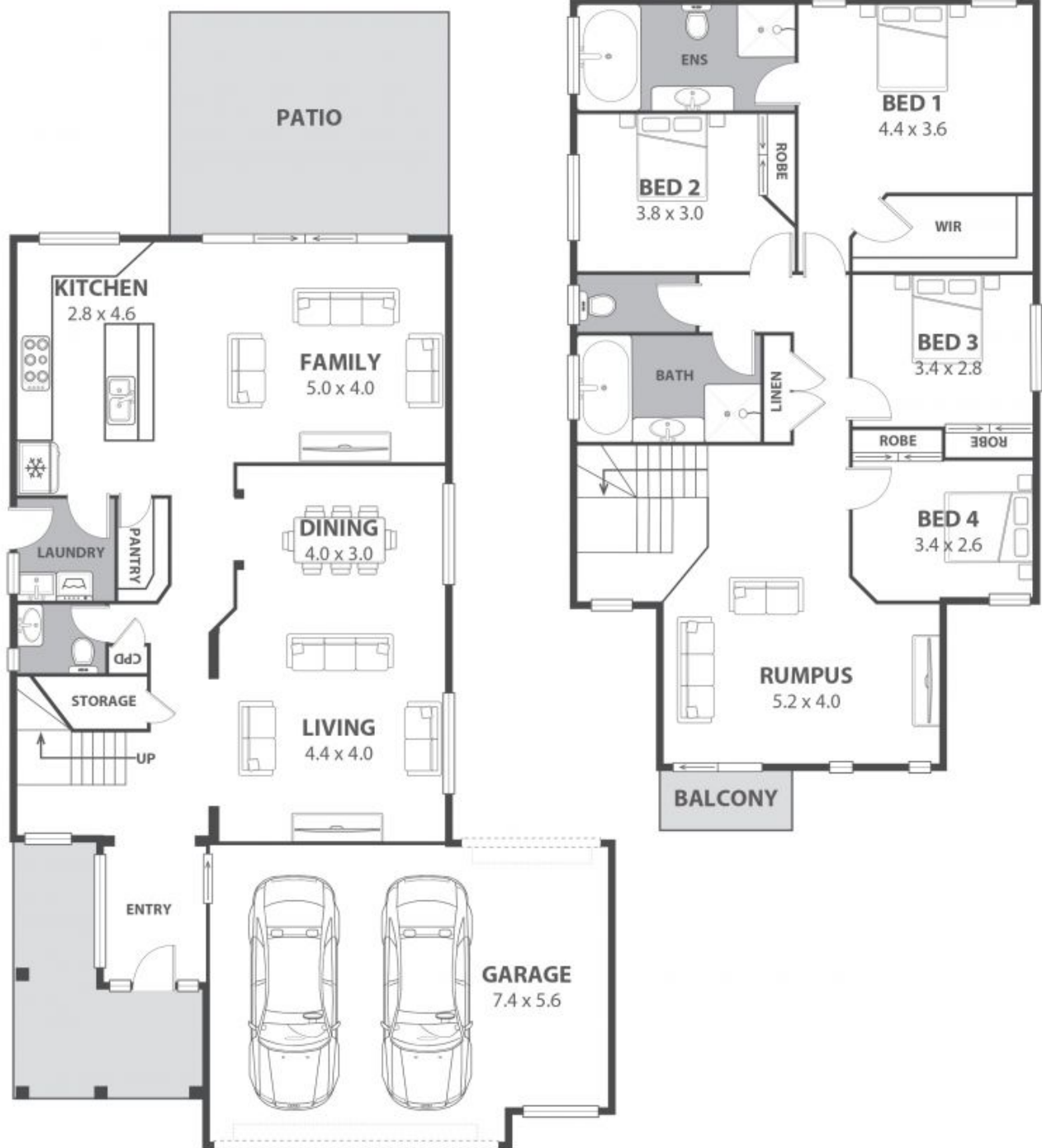
When the weekends roll around, you'll be spoilt for choice of things to do. Stroll to The Links Shell Cove in just nine minutes (approx.) for a hit of golf, or head down to the Shell Cove Marina, just a five-minute drive from home (approx.) to check out the boats. Drive over to Shellharbour's

**Price:** Contact Agent  
**Council Rates:** \$596.00 p/q

**Adam McMahon**

**Adam McMahon**

02 4267 5377



**16 Gore Avenue, Shell Cove**

Internal Space 243m<sup>2</sup>



Plans shown are for presentation purposes and are not part of any legal document in title and are subject to errors, omissions, inaccuracies and should not be used as sole and accurate reference. Particulars given are for general information only and do not constitute any representation on the part of the vendor or agent. No liability will be accepted.