



26 East Street Russell Vale, NSW



3



2



2

Bespoke five bedroom family living in the heart of Russell Vale

Set on a generous leafy block within walking distance of great coffee, the local primary school, and the superb Russell Vale Golf Club, this home invites an outdoor lifestyle, with spectacular garden spaces and proximity to parks and beaches.

This would make a beautiful family home, or the perfect weekender for city families seeking some fresh air and space to escape to.

Location

Nestled in the heart of family-friendly Russell Vale, this home enjoys a prime, close-to-everything position and a roomy block, perfect for growing families who love the outdoor lifestyle.

Great coffee will never be far away when you make this house your home, with the renowned Flat White with One caf? just 270m from your front door (approx.). Head out for lunch and

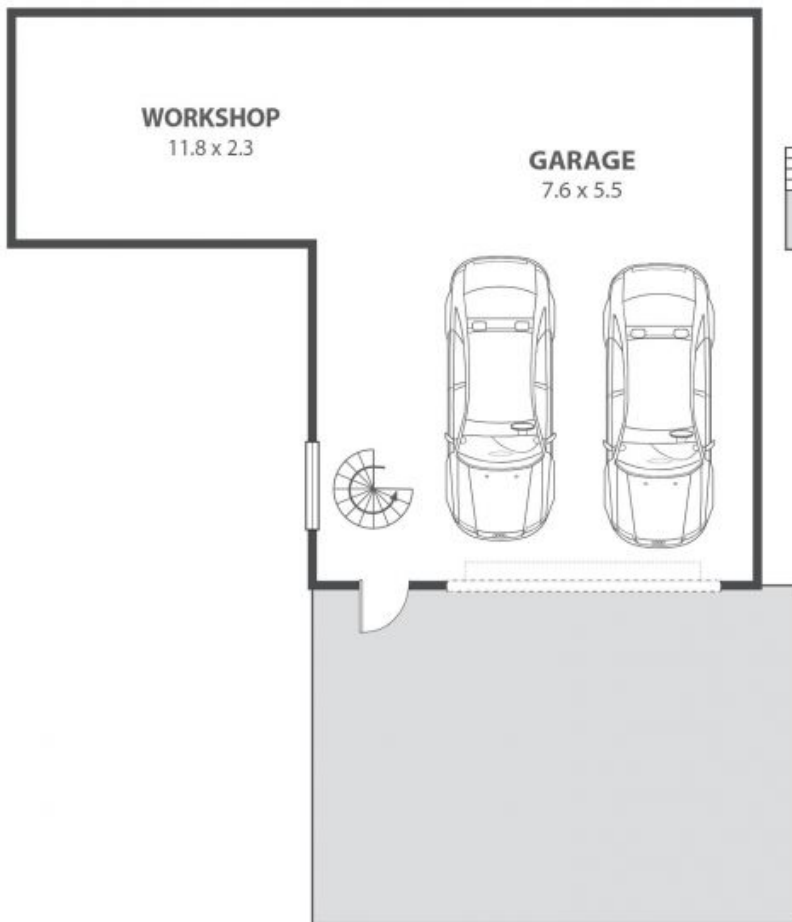
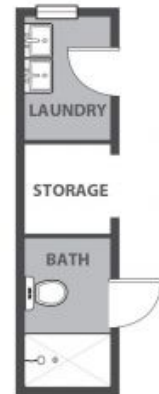
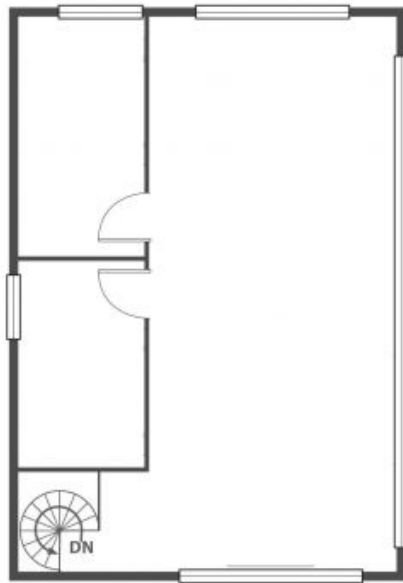
Price: Contact Agent

Council Rates: \$535.09 p/q

Adam McMahon

Adam McMahon

02 4267 5377



26 East Street, Russell Vale

Internal Space 205m²



Plans shown are for presentation purposes and are not part of any legal document or title and are subject to errors, omissions, inaccuracies and should not be used as sole and accurate reference. Particulars given are for general information only and do not constitute any representation on the part of the vendor or agent. No liability will be accepted.