



44 Williams Crescent Russell Vale, NSW



3



2



6

The ultimate entertainer, with room for the whole family!

Families and entertainers ? add this home to your inspection list! Ideally positioned in family-friendly Russell Vale close to beaches, schools, and shops, this three-bedroom home has been meticulously maintained and perfectly designed for family life, with two living spaces, two bathrooms, and spectacular gardens and outdoor entertaining spaces. Move-in ready with potential for cosmetic upgrades, this home offers a fabulous family lifestyle.

Price: \$1,475,000

Council Rates: \$529.35 p/q

Location

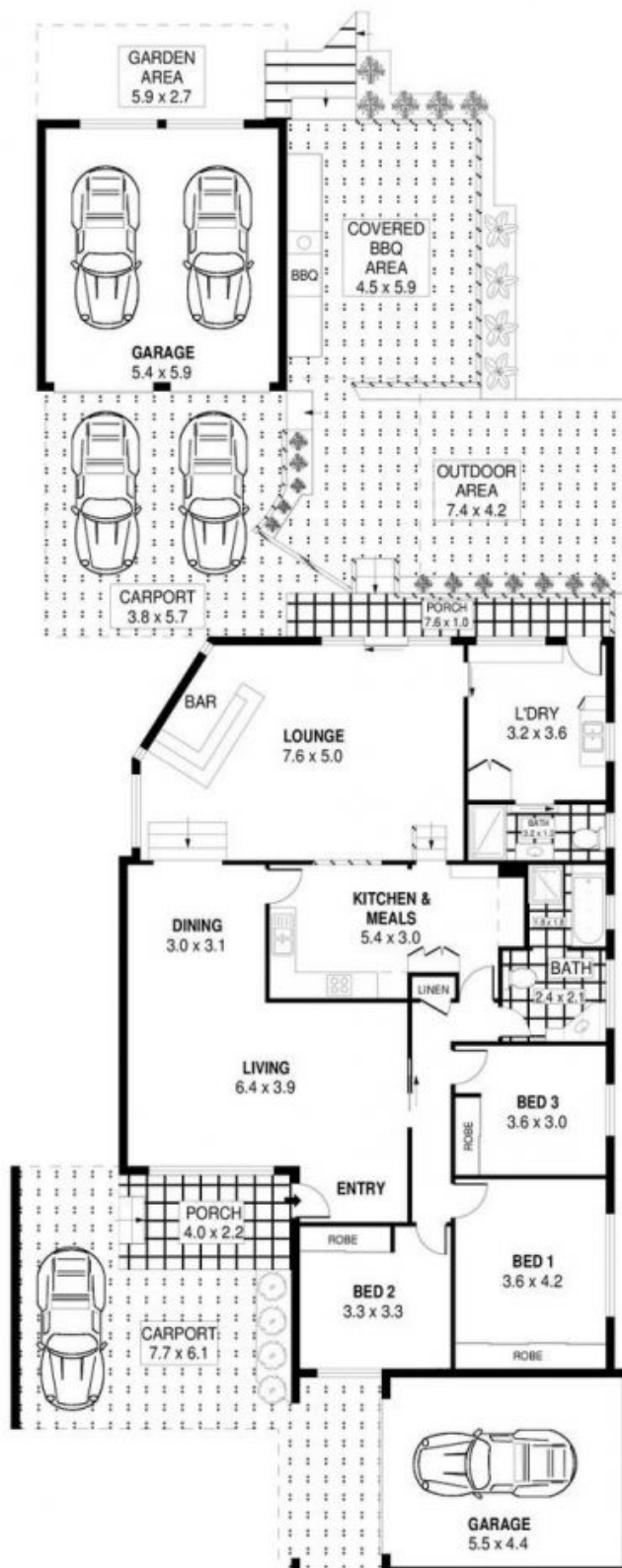
This beautifully kept family home offers a fantastic outdoor lifestyle, with its proximity to the Illawarra Escarpment and some of the region's most stunning beaches ensuring there's always an adventure to be found.

Take a brisk morning walk to the much-loved Flat White with One for your morning coffee, or take the six-minute drive (approx.) to the iconic Bulli Beach Caf? for a bite to eat after a swim at the Bulli Rock Pool. The whole family will love exploring the magnificent Illawarra Escarpment, just

Adam McMahon

Adam McMahon

02 4267 5377



SCALE (METRES)

PLANS SHOWN ONLY INDICATIVE OF LAYOUT. DIMENSIONS ARE APPROXIMATE.
Ref. No: 92754



INT	: 164m ²
EXT	: 96m ²
GARAGES	: 58m ²
CARPORTS	: 75m ²

44 WILLIAMS CRESCENT

RUSSELL VALE