



44 Williams Crescent Russell Vale, NSW



3



2



6

## The ultimate entertainer, with room for the whole family!

Families and entertainers ? add this home to your inspection list! Ideally positioned in family-friendly Russell Vale close to beaches, schools, and shops, this three-bedroom home has been meticulously maintained and perfectly designed for family life, with two living spaces, two bathrooms, and spectacular gardens and outdoor entertaining spaces. Move-in ready with potential for cosmetic upgrades, this home offers a fabulous family lifestyle.

**Price:** \$1,475,000

**Council Rates:** \$529.35 p/q

### Location

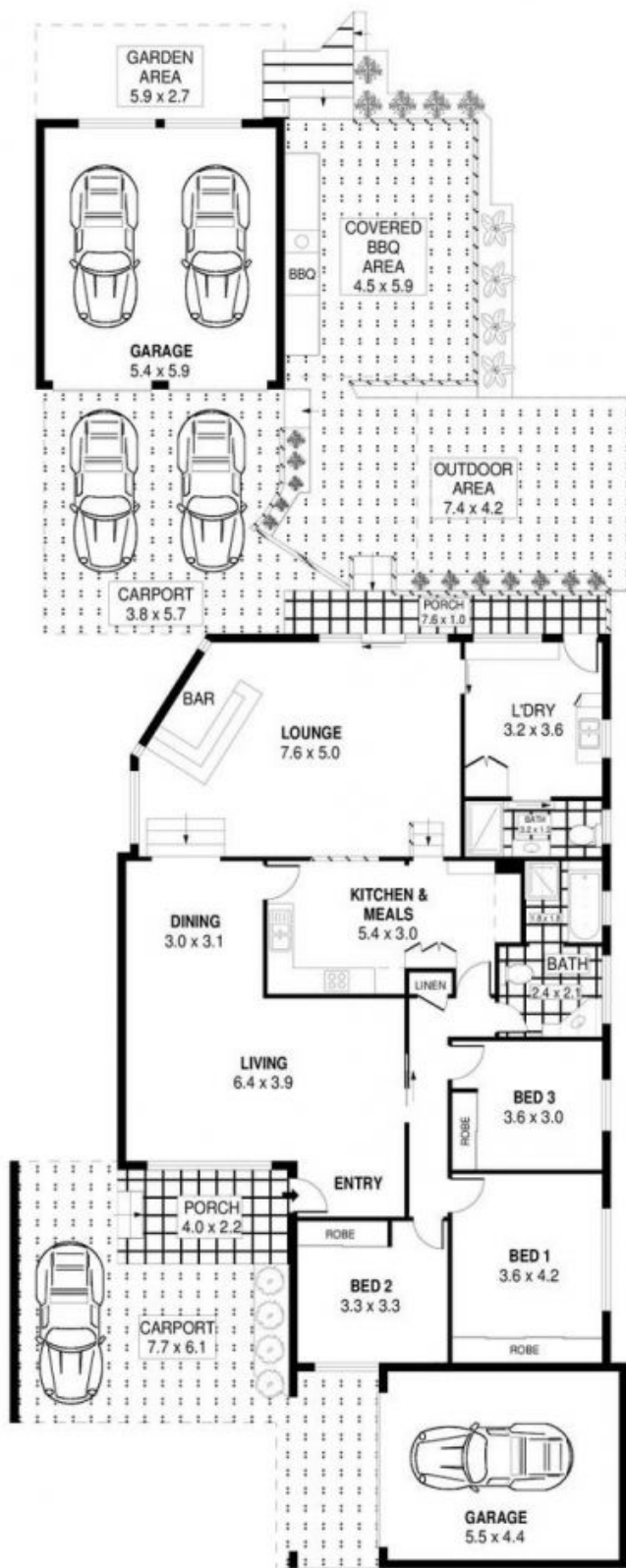
This beautifully kept family home offers a fantastic outdoor lifestyle, with its proximity to the Illawarra Escarpment and some of the region's most stunning beaches ensuring there's always an adventure to be found.

Take a brisk morning walk to the much-loved Flat White with One for your morning coffee, or take the six-minute drive (approx.) to the iconic Bulli Beach Caf? for a bite to eat after a swim at the Bulli Rock Pool. The whole family will love exploring the magnificent Illawarra Escarpment, just

**Adam McMahon**

**Adam McMahon**

02 4267 5377



SCALE (METRES)

PLANS SHOWN ONLY INDICATIVE OF LAYOUT. DIMENSIONS ARE APPROXIMATE.  
Ref. No: 92754

INT	: 164m <sup>2</sup>
EXT	: 96m <sup>2</sup>
GARAGES	: 58m <sup>2</sup>
CARPORTS	: 75m <sup>2</sup>

44 WILLIAMS CRESCENT

RUSSELL VALE