



5/50A Thalassa Avenue East Corrimal, NSW



2



1



1

## An apartment to make your own + fabulous walk-to-the-beach location

Located in Wollongong's seaside suburb of East Corrimal, this two-bedroom apartment enjoys a fabulous location within walking distance of the beach, cafes, and parks. Perfect for first home buyers, renovators, and investors alike, this charmingly retro apartment is move-in-ready with exciting potential for updates to create an idyllic coastal retreat.

### Location

Stroll to Frank 'n Beans cafe for a coffee to enjoy as you take the 12-minute (approx.) walk to the pristine sands of Corrimal Beach, with the stunning Bellambi Lagoon Nature Park providing an idyllic stop off along the way.

A five-minute drive (approx.) will have you in the heart of Corrimal's shopping precinct, while just 12 minutes away (approx.) Wollongong offers big-city conveniences and endless dining and entertainment options. Take the short drive to Corrimal Station for easy access

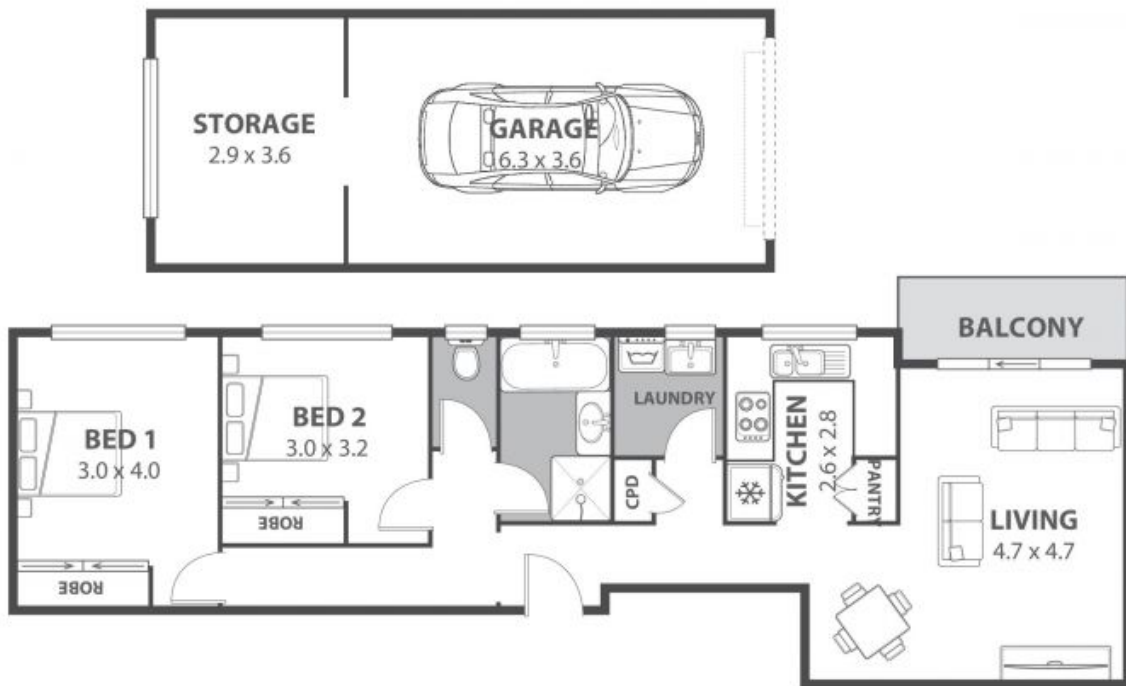
**Price:** \$555,000

**Council Rates:** \$362.10 p/q

**Ethan Hennessy**

**Adam McMahon**

02 4267 5377



**5/50a Thalassa Avenue, East Corrimal**

Internal Space 112m<sup>2</sup>



Plans shown are for presentation purposes and are not part of any legal document or title and are subject to errors, omissions, inaccuracies and should not be used as sole and accurate reference. Particulars given are for general information only and do not constitute any representation on the part of the vendor or agent. No liability will be accepted.