



4/392 Princes Highway Woonona, NSW

2   
 2   
 1

### Parkside living in the heart of the village!

Located in the heart of Woonona's bustling village, this immaculately presented double-story apartment offers spacious, light-filled interiors, stunning park views, and unbeatable convenience. With the beach only moments away and the village's cafes, restaurants, and shops right on your doorstep, this impressive property presents a fantastic opportunity for first home buyers, downsizers, and investors.

#### Location

Perfectly positioned for lifestyle and convenience on Woonona's main street, this home puts you right in the middle of the action whilst providing a private, quiet haven to retreat to. Step out the front door straight into the heart of Woonona's town centre, with its fabulous selection of shops, restaurants, cafes, grocers, and amenities on your doorstep.

...

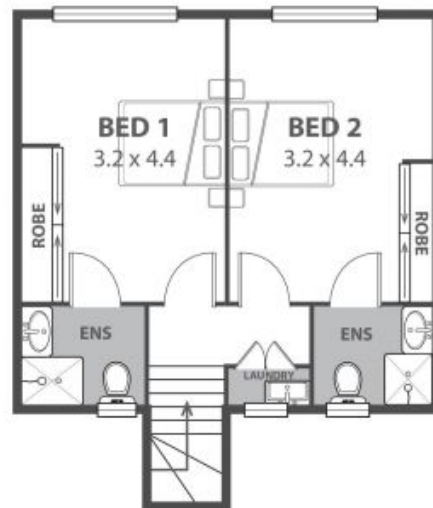
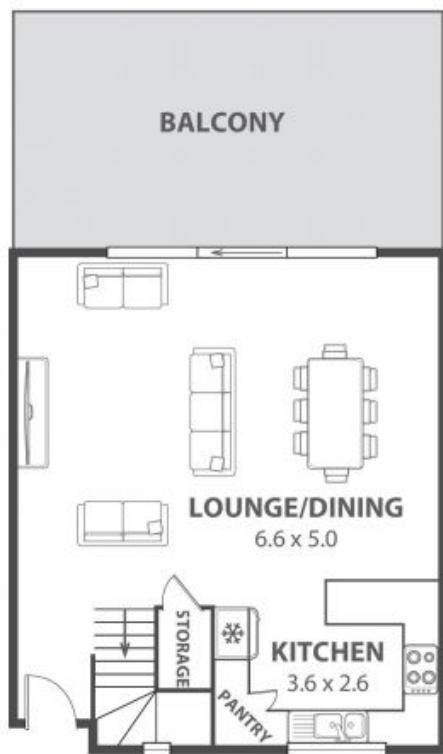
All the glamour and excitement of Sydney awaits just a 68-minute drive from home (approx.) while Wollongong's vibrant CBD is just 15 minutes away (approx.). Walk to the bus stop in one minute (approx.) o

**Price:** \$680,000  
**Council Rates:** \$347.00 p/q  
**Water Rates:** \$200.00 p/q  
**Strata Rates:** \$1,168.00 p/q

**Adam McMahon**

**Adam McMahon**

02 4267 5377



4/392 Princes Highway, Woonona

Internal Space 89m<sup>2</sup>



Plans shown are for presentation purposes and are not part of any legal document in force and are subject to errors, omissions, inaccuracies and should not be used as sole and accurate reference. Particulars given are for general information only and do not constitute any representation on the part of the vendor or agent. No liability will be accepted.