



9 Williams Crescent Russell Vale, NSW



3



2



1

Flexible floor plan, a large block, and an ideal lifestyle location

Families and renovators will delight in this perfectly positioned three-bedroom home in family-friendly Russell Vale, close to shops, schools, and stunning beaches. Boasting a flexible floor plan and a huge garden offering the potential to develop or extend (STCA), this is an exciting opportunity to create the home you've always dreamed of.

Location

Ideally positioned for family life in a quiet residential street close to parks, spectacular beaches, and great shopping, this home offers a fabulous lifestyle.

Walk to the much-loved Flat White with One for your morning coffee, or drive to the iconic Bulli Beach Caf? in only six minutes (approx.) for a delicious lunch after a dip at the beautiful Bulli Rock Pool. The breathtaking beaches of Bulli and Woonona are both just a four-minute drive from home (approx.), while Corrimal Beach and Bellambi Beach await just eight minutes from home (approx.) ensuring easy beach days ahead. Walk to the Russell Vale Golf Club in just ten minutes (approx.) to spend an idyllic afternoon on the green, or take the boat down to the Bellambi Boat Ramp in just eight minutes (approx.) to enjoy a day out

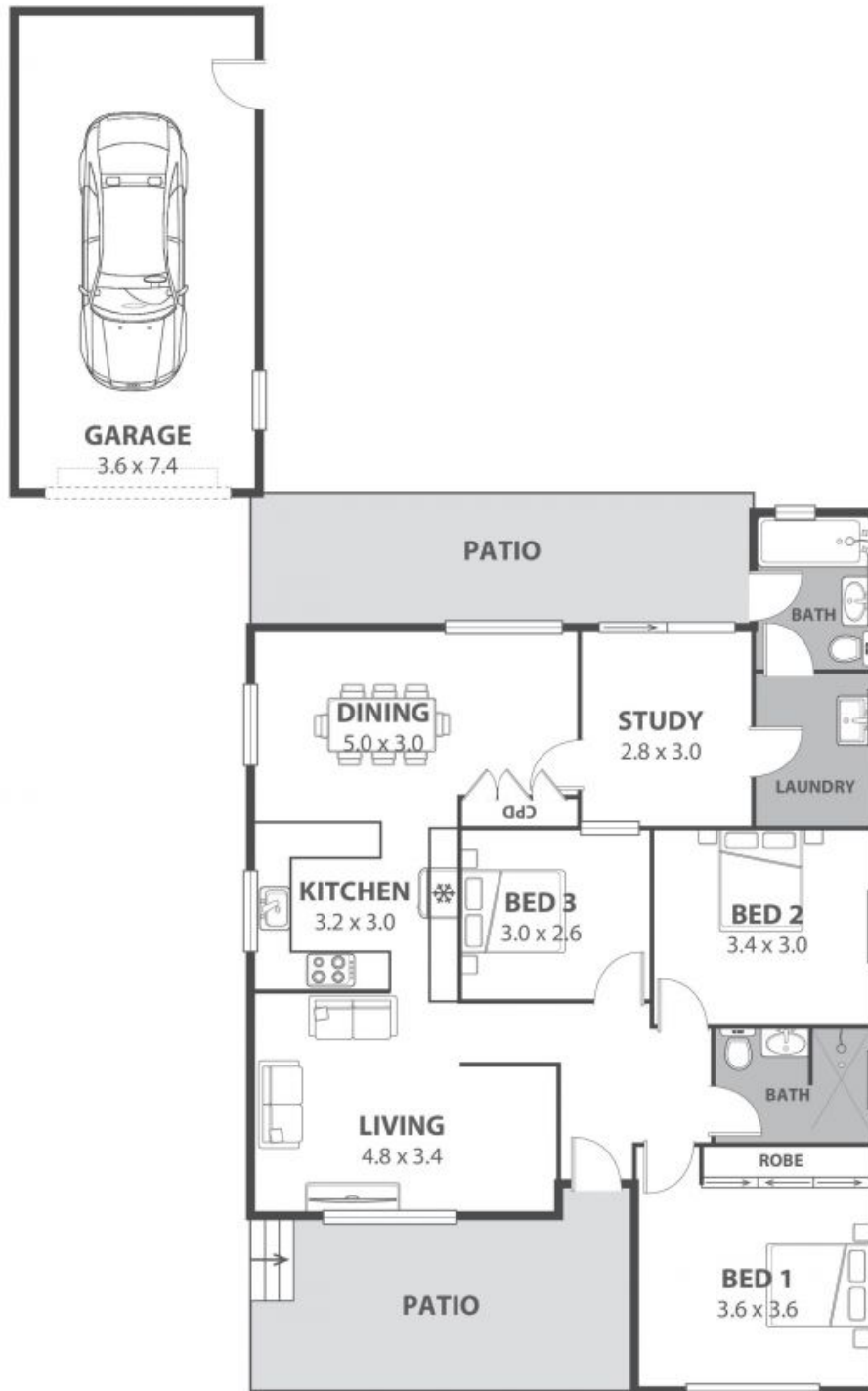
Price: \$955,000

Council Rates: \$514.82 p/q

Matt Dignam

Isabelle Lace

02 4267 5377



9 Williams Crescent, Russell Vale

Internal Space 128m²



Plans shown are for presentation purposes and are not part of any legal document in force and are subject to errors, omissions, inaccuracies and should not be used as sole and accurate reference. Particulars given are for general information only and do not constitute any representation on the part of the vendor or agent. No liability will be accepted.