

23 Curlew Street Wongawilli, NSW

 4

 2

 2

## Space, style, and easy family living in perfectly-positioned Wongawilli

Easy modern living awaits in this superb near-new home, offering a family-friendly floorplan with plenty of space for quality time together and four private bedroom retreats. Entertainers will love the alfresco patio, while the whole family will love the peaceful Wongawilli lifestyle.

### Location

Offering a tranquil position within the coveted Sanctuary Ponds Estate, this fabulous family residence offers quiet estate living with the convenience of Dapto's vibrant shopping district only seven minutes from home (approx.) and the bright lights and great shopping of Wollongong just a 20-minute drive away (approx.).

...

...

Property...

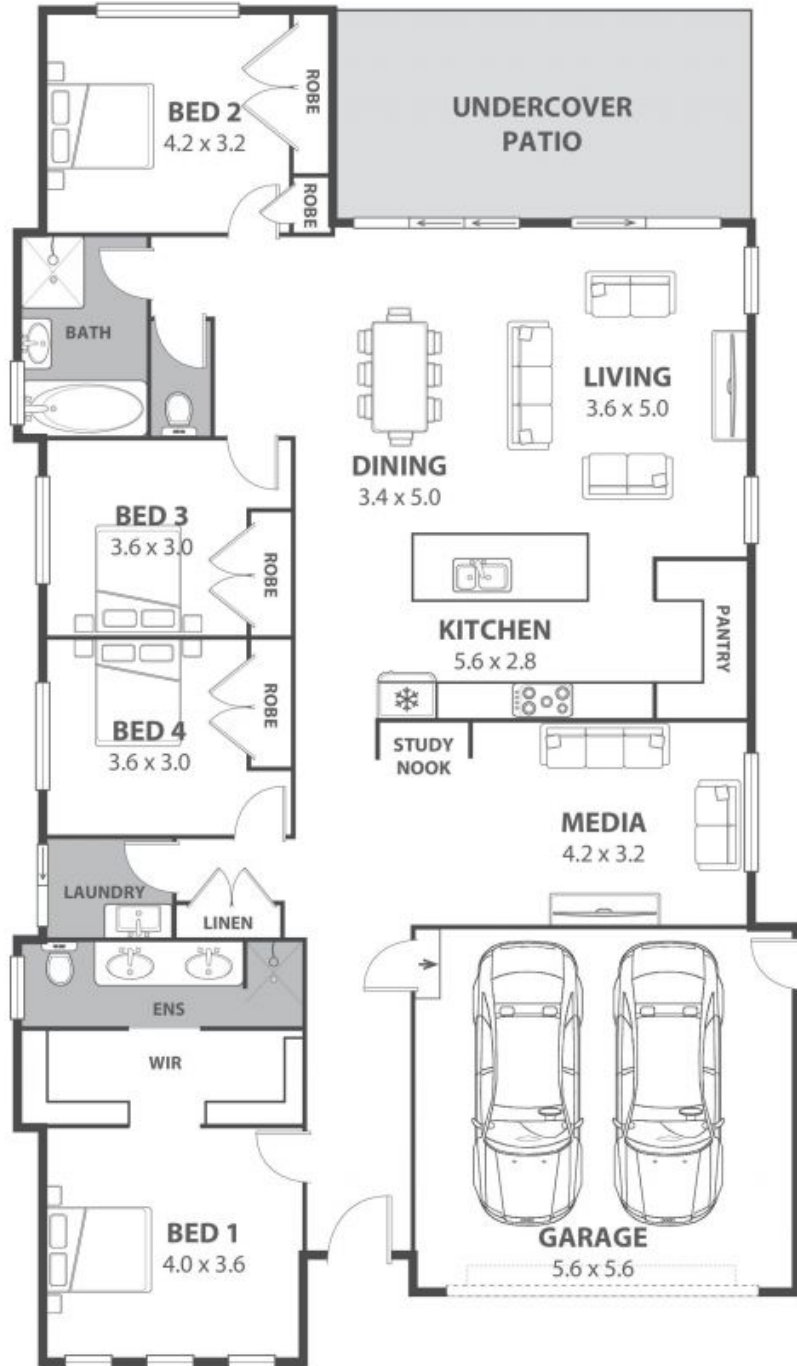
Come home to spacious, light-filled family living in this perfectly presented home in the

**Price:** \$1,100,000

**Council Rates:** \$478.00 p/q

**Water Rates:** \$207.00 p/q

**Ethan Hennessy**



## 23 Curlew Street, Wongawilli

Internal Space 191m<sup>2</sup>



Plans shown are for presentation purposes and are not part of any legal document in force and are subject to errors, omissions, inaccuracies and should not be used as sole and accurate reference. Particulars given are for general information only and do not constitute any representation on the part of the vendor or agent. No liability will be accepted.