



13 Hillside Drive Albion Park, NSW



4



1



1

Space, convenience, and peaceful family living

With a family-friendly single-level floorplan and light-filled interiors, this updated four-bedroom home offers comfortable family living moments from Shellharbour and within walking distance of every local convenience.

Location

A selection of superb beaches beckons within just 15 minutes of home (approx.) promising all the benefits of a coastal lifestyle, while the Calderwood Valley Golf Course will delight keen golfers, just nine minutes from home (approx.).

Albion Park Public School and Albion Park High School are both only a short walk from home ensuring easy school mornings, while those with younger kids will appreciate the great selection of childcare options close by. ...

...

Property...

Offering easy family living with plenty of room to move, this updated home will appeal to home buyers and investors alike. Contemporary updates ensure you can either move straight in with nothing to do, or plan further cosmetic updates to suit your taste. Large families will also be excited b

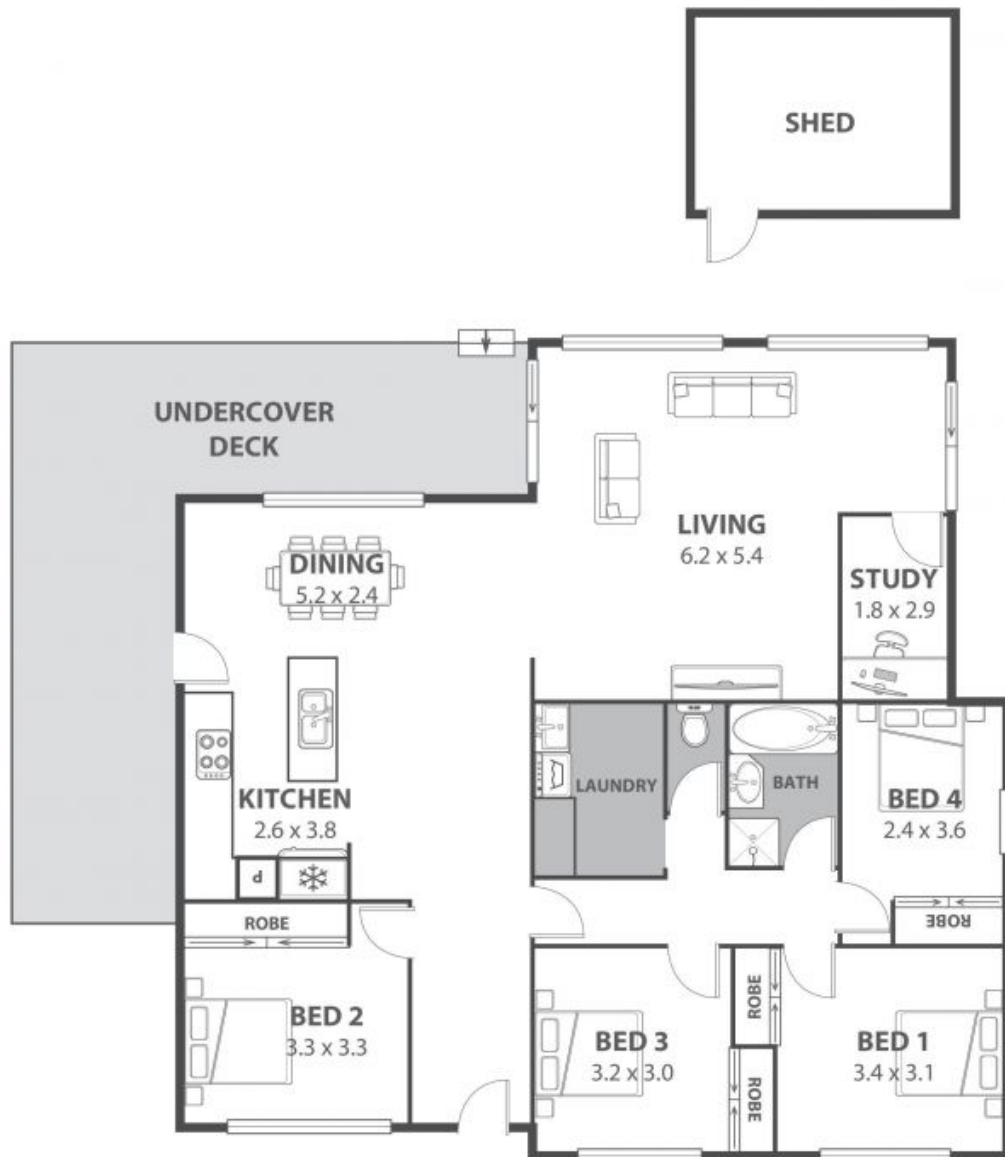
Price:

\$740,000

Ethan Hennessy

Adam McMahon

02 4267 5377



13 Hillside Drive, Albion Park

Internal Space 147m²



Plans shown are for presentation purposes and are not part of any legal document in title and are subject to errors, omissions, inaccuracies and should not be used as sole and accurate reference. Particulars given are for general information only and do not constitute any representation on the part of the vendor or agent. No liability will be accepted.