



6/13 Parmenter Avenue Corrimal, NSW



## Easy townhouse living in the heart of Corrimal!

Families will be delighted by this comfortable, move-right-in four-bedroom townhouse, with a spacious private garden and an enviable location within easy walking distance of Corrimal's vibrant town centre.

### Location

Stroll into the heart of Corrimal's thriving shopping precinct in just fifteen minutes (approx.) to find a choice of supermarkets, big-name and boutique shopping, and fabulous cafes and eateries.

Families will love the short walk to Corrimal Public School and St. Columbkille's Catholic Parish Primary School, while Corrimal High School is just a six-minute drive away (approx.).

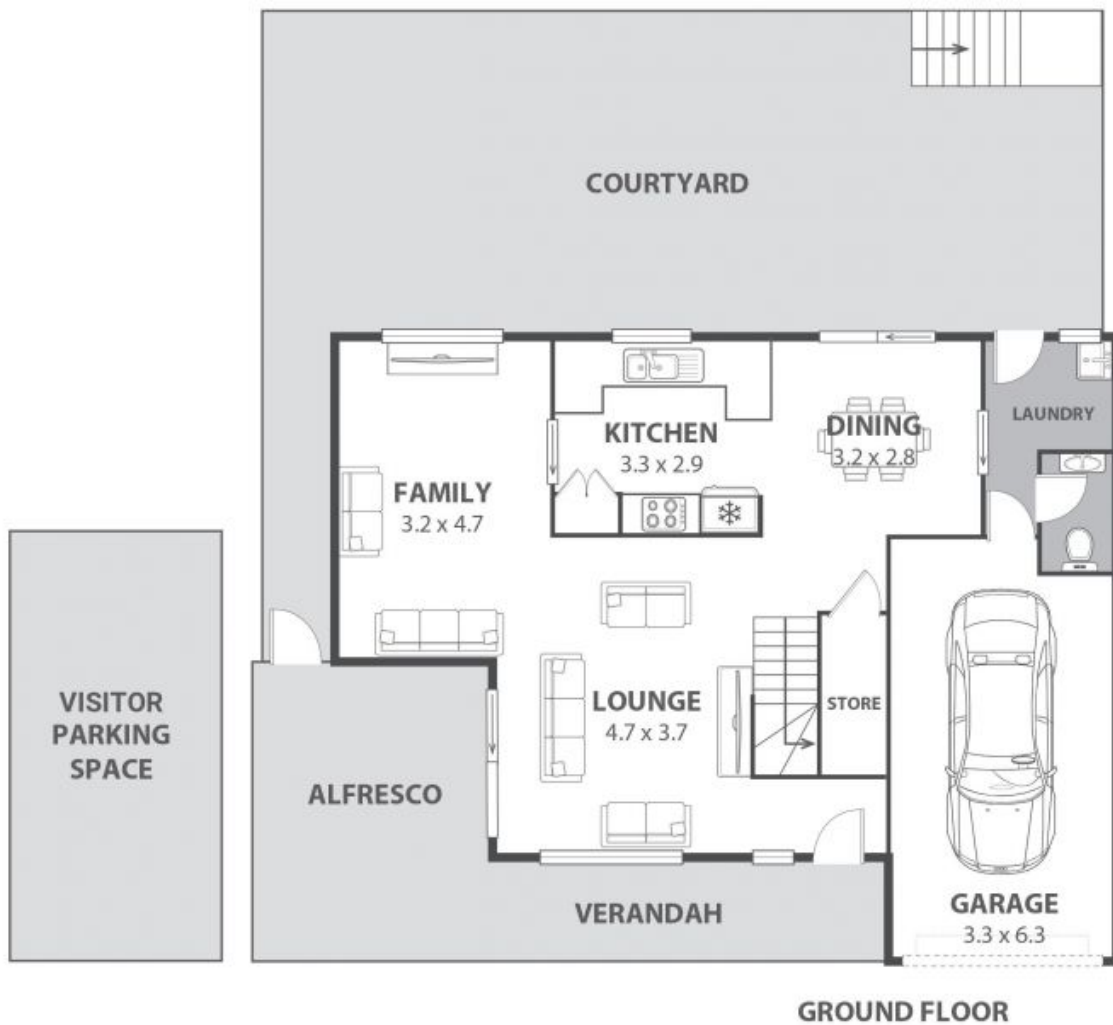
The bright lights and excitement of Sydney await just a 71-minute drive from home (approx.) while Wollongong offers

**Price:** \$920,000  
**Council Rates:** \$372.00 p/q  
**Water Rates:** \$270.00 p/q  
**Strata Rates:** \$903.00 p/q

**Adam McMahon**

**Adam McMahon**

02 4267 5377



**6/13 Parmenter Avenue, Corrimal**

Internal Space 179m<sup>2</sup>

Plans shown are for presentation purposes and are not part of any legal document or title and are subject to error, omission, inaccuracies and should not be used as sole and accurate reference. Particulars given are for general information only and do not constitute any representation on the part of the vendor or agent. No liability will be accepted.