



58/71-83 Smith Street Wollongong, NSW



3



2



3

Inner-city Apartment with house-like proportions, perfect for families or flatmates!

This inner-city apartment offers spacious urban living perfect for families or flatmates, with schools, shops, cafes, and beaches all a short walk from home.

Location

Located smack bang in the middle of Wollongong's CBD, this fabulous home offers a dynamic inner-city lifestyle. You'll be surrounded by cafes and restaurants, great shopping, and entertainment, while the city's beaches beckon just moments from home.

is just a three-minute walk from your front door (approx.), while Wollongong Station is an easy 12-minute walk from home (approx.) with regular trains to Sydney and the stunning seaside villages dotted along the coast.

...

Property...

Offering secure, comfortable family or share-house living with stunning escarpment views,

Price: \$852,500

Council Rates: \$370.00 p/q

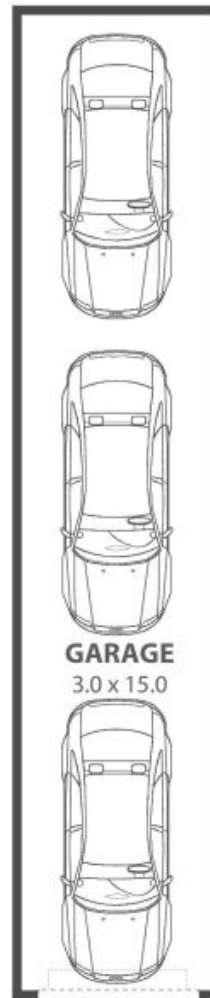
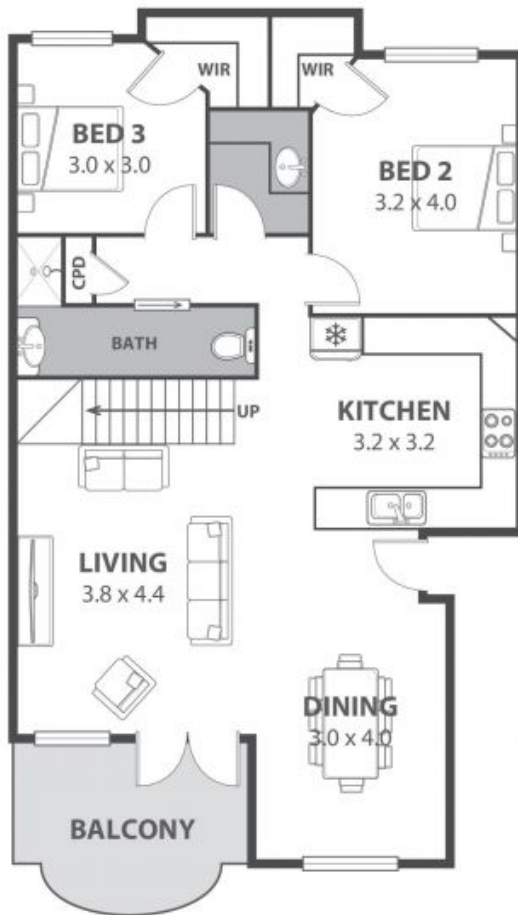
Water Rates: \$225.00 p/q

Strata Rates: \$1,212.00 p/q

Ethan Hennessy

Adam McMahon

02 4267 5377



58/71 Smith Street, Wollongong

Internal Space 170m²



Plans shown are for presentation purposes and are not part of any legal document in force and are subject to errors, omissions, inaccuracies and should not be used as sole and accurate reference. Particulars given are for general information only and do not constitute any representation on the part of the vendor or agent. No liability will be accepted.