



1/2 Catherine Street Gwynneville, NSW



2



2



1

Near-new duplex with everything on your doorstep and the CBD only minutes away!

Enviably positioned just minutes from Wollongong's vibrant CBD and within walking distance of every convenience, this beautifully designed and meticulously finished duplex offers light-filled living in a fabulous lifestyle location.

Location

Enviably located in Wollongong's inner-city suburb of Gwynneville, this home offers a convenient lifestyle with the heart of the city only four minutes from home and local shops, cafes, and services within easy walking distance.

Those with kids will enjoy easy school mornings ahead, with Gwynneville Public School only a nine-minute walk from home (approx.) and Wollongong High School of the Performing Arts just four minutes away by car (approx.).

Take the short stroll to the Wiseman Park Bowling Club for a bistro dinner, or gather some friends for a fun game of barefoot bowls. Wiseman Park Reserve offers tennis courts, a playground, and cricket facilities just a four-minute walk away (approx.), while the Beaton Park Leisure Centre will impress those who like to keep fit, with an indoor pool and well-

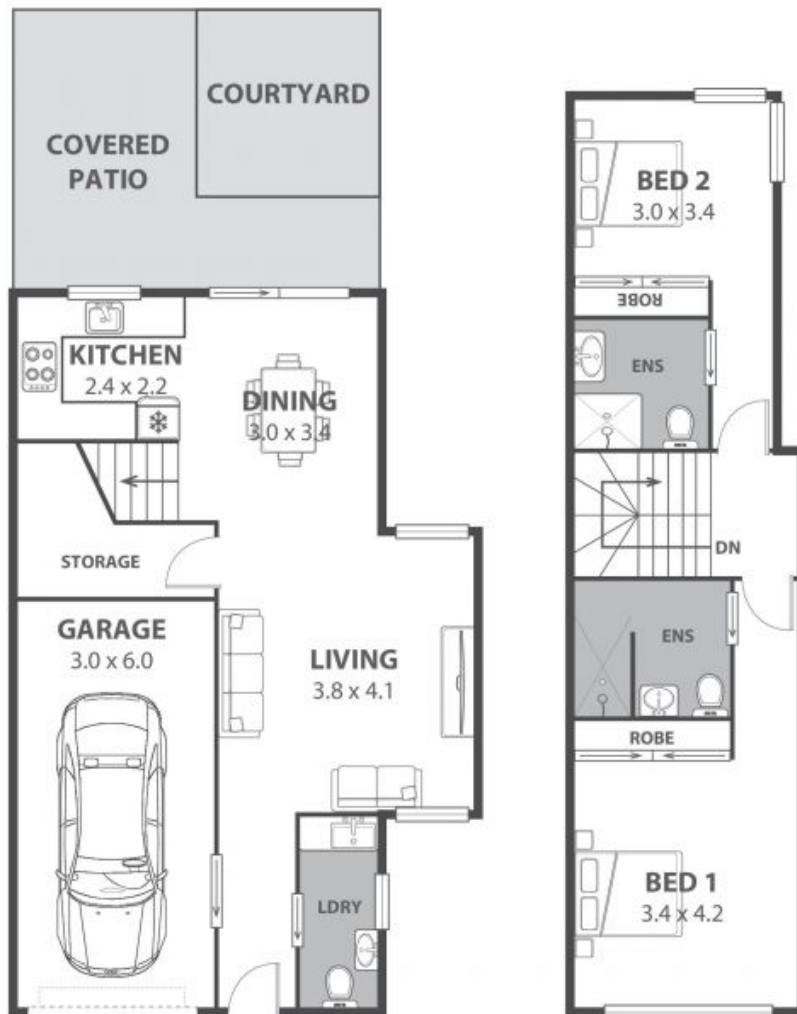
Price: \$850,000

Strata Rates: \$264.00 p/q

Ethan Hennessy

Adam McMahon

02 4267 5377



1 Catherine Street, Gwynneville

Internal Space 114m²



Plans shown are for presentation purposes and are not part of any legal document in force and are subject to errors, omissions, inaccuracies and should not be used as sole and accurate reference. Particulars given are for general information only and do not constitute any representation on the part of the vendor or agent. No liability will be accepted.