

4/392 Princes Highway Woonona, NSW



2



2



1

PARKSIDE LIVING IN THE HEART OF THE VILLAGE

Located in the heart of Woonona's bustling village, this immaculately presented double-story apartment offers spacious, light-filled interiors, stunning park views, and unbeatable convenience. With the beach only moments away and the village's cafes, restaurants, and shops right on your doorstep, this impressive property presents a fantastic the ideal lifestyle accomodation

Features include:

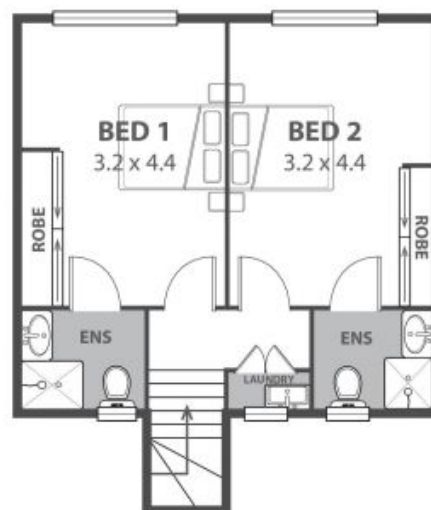
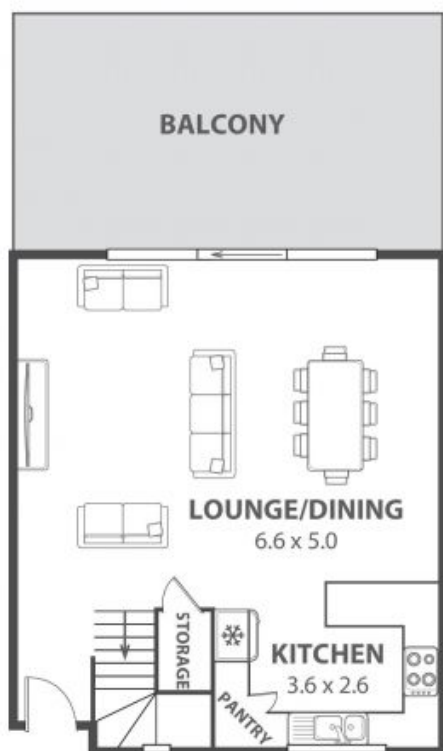
- Townhouse style apartment offering comfort and privacy, with an easy-living floor plan sprawled over two levels
- Upstairs you find two double bedrooms appointed with spacious built-in robes and private en suites, providing the ultimate in privacy and comfort.
- Sliding glass doors invite you to the huge balcony with a stunning outlook over Strachan Park, offering plenty of space to set up an alfresco living area perfect for entertaining.

Price: \$550 pw

Available Date: 2023-02-28

Rebecca Stephens

0488117480



4/392 Princes Highway, Woonona

Internal Space 89m²



Plans shown are for presentation purposes and are not part of any legal document in title and are subject to errors, omissions, inaccuracies and should not be used as sole and accurate reference. Particulars given are for general information only and do not constitute any representation on the part of the vendor or agent. No liability will be accepted.