



632A Princes Highway Russell Vale, NSW



4



2



2

## Updated family living awaits!

Conveniently positioned between Woonona and Corrimal, this four-bedroom home offers light-filled living spaces and a private back garden with superb outdoor entertaining. Situated only minutes from some of the region's most stunning beaches and within walking distance of renowned cafes, parks, Russell Vale Golf Club, and the local primary school, the whole family will love living here!

### Location

...

Walk to Russell Vale Public School in nine minutes (approx.), with Woonona High School just a four-minute drive away ensuring easy school mornings for families with kids of all ages. ...

...

Drive to Sydney in just 80 minutes (approx.) or leave the car at nearby Bellambi Station to enjoy the journey by rail....

...

Property...

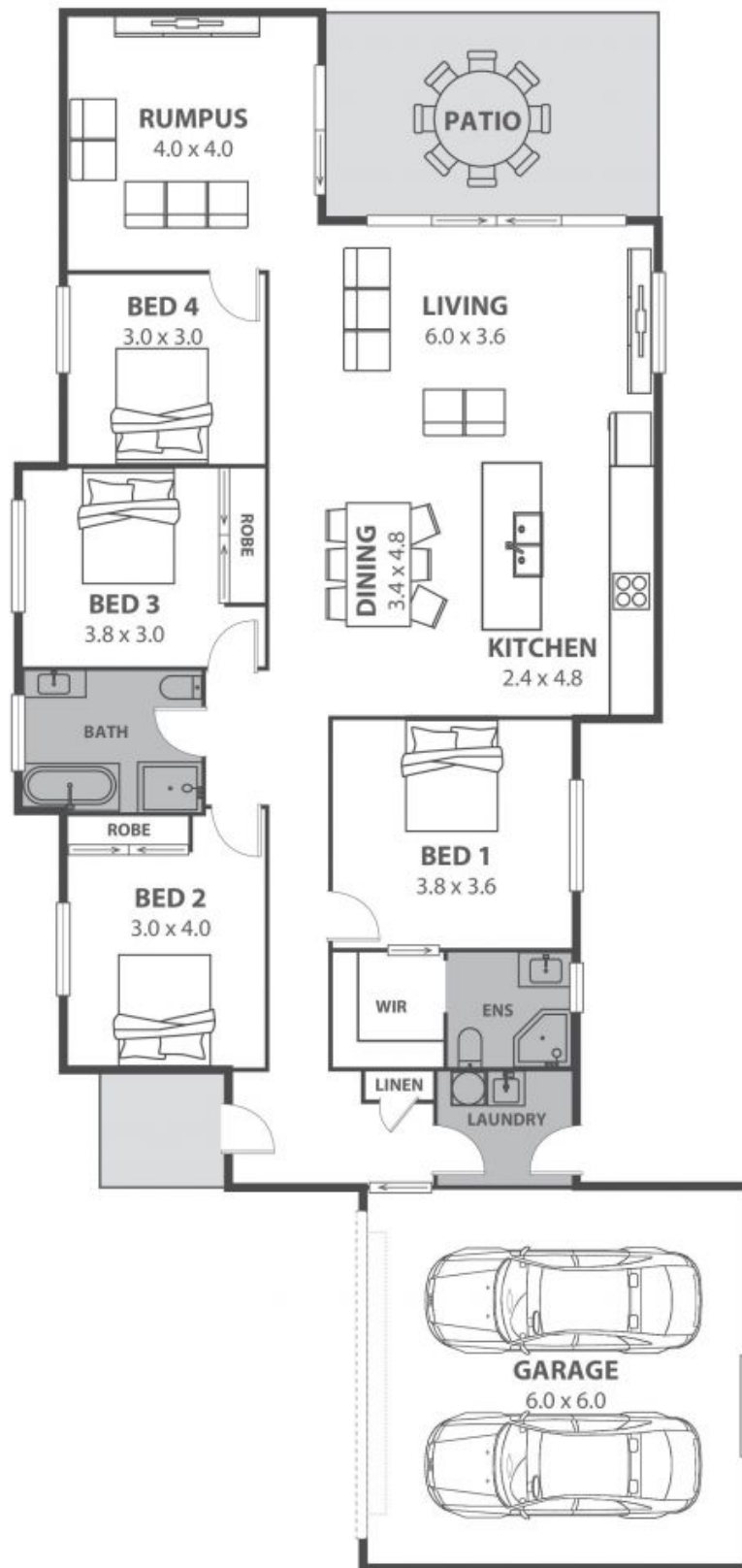
Sure to delight growing

**Price:** \$955,000

**Ethan Hennessy**

**Isabelle Lace**

02 4267 5377



632A Princes Highway, Russell Vale

Internal Space 181m<sup>2</sup>



Plans shown are for presentation purposes and are not part of any legal document in force and are subject to errors, omissions, inaccuracies and should not be used as sole and accurate reference. Particulars given are for general information only and do not constitute any representation on the part of the vendor or agent. No liability will be accepted.