



6/29 Park Road Bellambi, NSW



2



1



1

Light-filled, easy apartment living awaits!

Nestled within a beautifully maintained gated complex, this two-bedroom apartment presents a fabulous opportunity for first-home buyers, downsizers, and clever investors. Boasting modern, light-filled interiors and an enviable lifestyle location, this is one to add to the inspection list!

LOCATION

Ideally situated for a convenient coastal lifestyle, this address puts shops, cafes, schools, and supermarkets within walking distance and the beach just minutes from home.

...

...

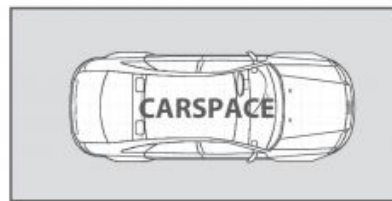
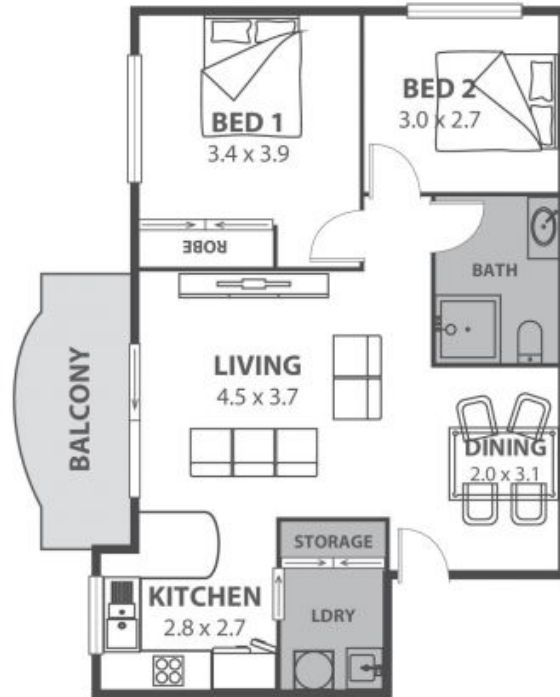
PROPERTY...

...

Light, bright, low-main

Price: Contact Agent
Council Rates: \$350.00 p/q
Water Rates: \$180.00 p/q
Strata Rates: \$869.00 p/q

Adam McMahon



6/29 Park Road, Bellambi

Internal Space 65m²



Plans shown are for presentation purposes and are not part of any legal document in force and are subject to errors, omissions, inaccuracies and should not be used as sole and accurate reference. Particulars given are for general information only and do not constitute any representation on the part of the vendor or agent. No liability will be accepted.