

1/26 Popes Road Woonona, NSW



## Easy coastal family living in the heart of Woonona

Enviably positioned within easy walking distance of Woonona Village and just three minutes from Bulli Beach (approx.), this move-in-ready three-bedroom townhouse is sure to delight first-home buyers seeking an idyllic coastal lifestyle.

### LOCATION

Offering a wonderful coastal village lifestyle, this ideally positioned home puts every convenience on your doorstep and beautiful beaches just moments from home.

Walk to Woonona Village in four minutes (approx.) to take your pick of local cafes, shops, grocers, and amenities. The convenience of Coles is also within easy walking distance in neighbouring Bulli, with Corrimal's vibrant shopping centres and choice of supermarkets just six minutes away (approx.).

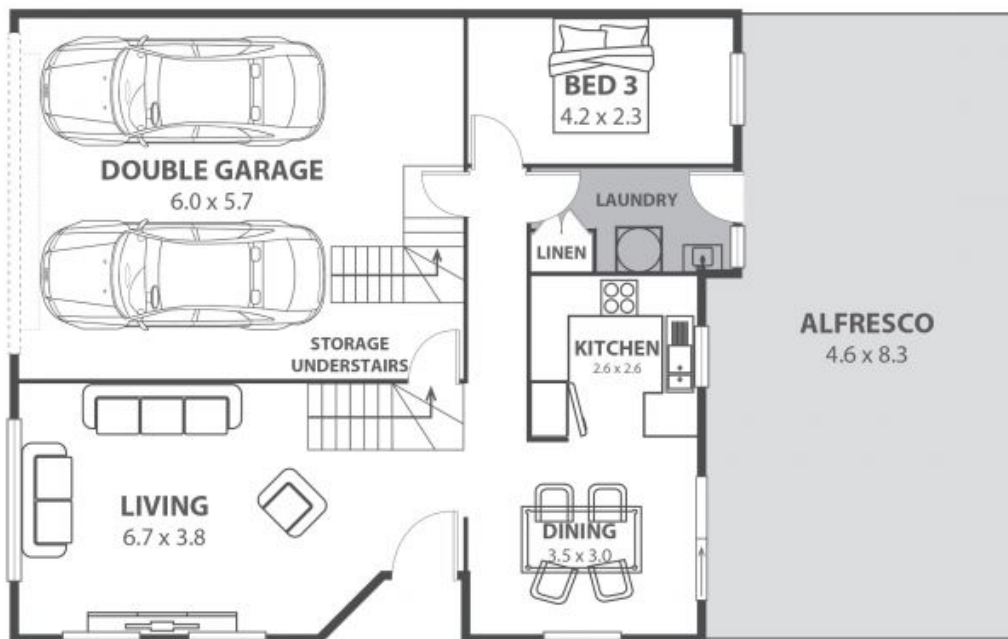
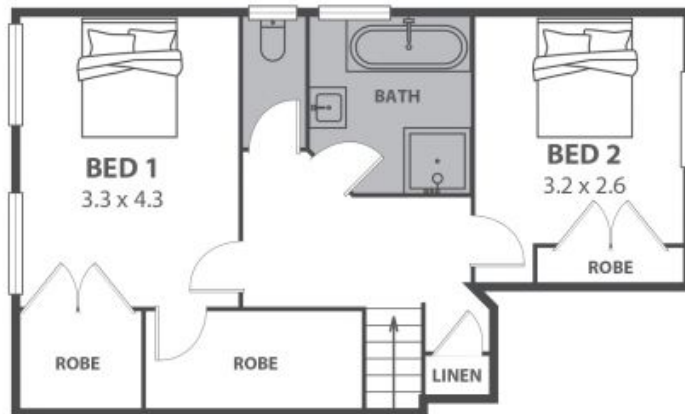
Bulli Beach is just a three-minute drive from home (approx.), tempting you to spend a day on the sand, meet friends for lunch at the iconic Bulli Beach Caf?, or take a dip at the stunning Bulli Rock Pool. Woonona Beach is also just moments from home, while the magnificent Rusell Vale Golf Clu

**Price:** \$815,000  
**Council Rates:** \$326.79 p/q  
**Water Rates:** \$275.20 p/q  
**Strata Rates:** \$650.00 p/q

**Matt Dignam**

**Isabelle Lace**

02 4267 5377



**1/26 Popes Rd, Woonona**

Internal Space 109m<sup>2</sup>



Plans shown are for presentation purposes and are not part of any legal document or title and are subject to errors, omissions, inaccuracies and should not be used as sole and accurate reference. Particulars given are for general information only and do not constitute any representation on the part of the vendor or agent. No liability will be accepted.