



28 Murray Park Road Figtree, NSW



Fully renovated for luxe family living in the treetops!

Offering four bedrooms, two living areas, and two huge outdoor entertaining spaces, this beautifully renovated home offers luxe family living on an enviably large allotment. Close to Figtree Village and only moments from the big-city excitement of Wollongong, this idyllic location has that 'away-from-it-all' feeling with every convenience at your fingertips.

Price: \$1,225,000
Council Rates: \$493.61 p/q
Water Rates: \$229.00 p/q

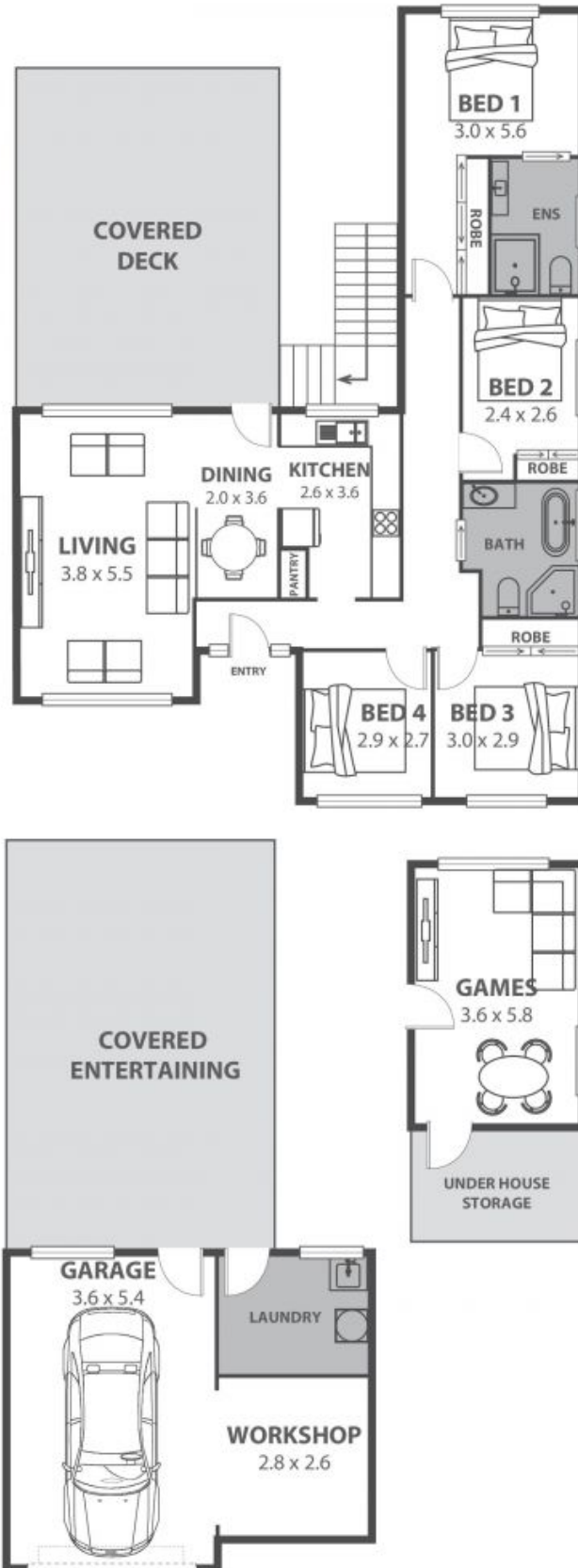
LOCATION

Ideally positioned for peaceful family living, this dreamy home ensures every convenience is within very easy reach.

Some of the region's most beautiful beaches await within 10-15 minutes away (approx.), with Wollongong City Beach inviting you for a quick dip just eight minutes from home (approx.).

Walk to Figtree Heights Public School in just ten minutes (approx.), stroll to KU Figtree Pre-school in five minu

Ethan Hennessy



28 Murray Park Road, Figtree

Internal Space 123m²



Plans shown are for presentation purposes and are not part of any legal document in title and are subject to errors, omissions, inaccuracies and should not be used as sole and accurate reference. Particulars given are for general information only and do not constitute any representation on the part of the vendor or agent. No liability will be accepted.