

6/15 Park Road Bellambi, NSW



Your first family home or a superb investment!

Occupying a coveted corner position in a block of just six well-kept homes, this beautifully presented family townhouse offers three spacious bedrooms, open-plan living, a luxurious new bathroom, and superb outdoor entertaining. Positioned within walking distance of shops, transport, and schools, this is an ideal home for growing families that will appeal to home buyers and investors alike.

Location

Offering a convenient coastal family lifestyle, this sought-after address is an easy walk from shops, cafes, schools, and supermarkets and only moments from some of the region's most beautiful beaches.

...

...

...

Property...

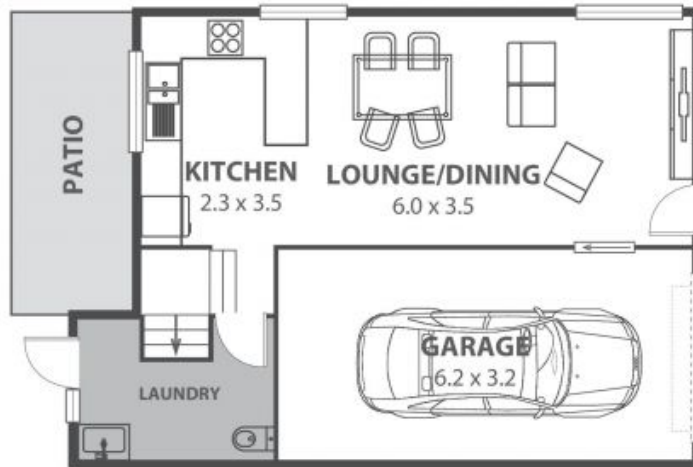
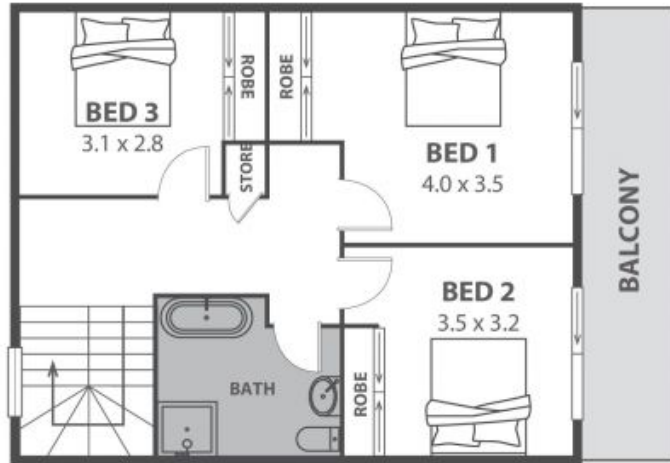
Easy family living awaits in this sunny three-bedroom townhouse, ideally positioned in a sought-after pocket of Bellambi. Tucked quietly away from the street in a pet-friendly complex of only six homes,

Price: \$759,000
Council Rates: \$381.00 p/q
Water Rates: \$237.00 p/q
Strata Rates: \$883.00 p/q

Ethan Hennessy

Ange Carrigan

02 4267 5377



6/15 Park Road, Bellambi

Internal Space 120m²



Plans shown are for presentation purposes and are not part of any legal document in force and are subject to errors, omissions, inaccuracies and should not be used as sole and accurate reference. Particulars given are for general information only and do not constitute any representation on the part of the vendor or agent. No liability will be accepted.