



288 Princes Highway Bulli, NSW

 4
  1
  5

## Prime lifestyle location!

Enviably situated just a short stroll from Bulli village and within easy walking distance of Sandon Point Beach, this property presents an incredibly exciting opportunity for investors seeking a prime development opportunity and families wanting to build their dream home.

**Price:** Contact Agent  
**Council Rates:** \$499.18 p/q

### LOCATION

With Bulli's welcoming village just a four-minute stroll from home (approx.) and your choice of beaches and sought-after schools within walking distance, this property is ideally located to enjoy the Bulli lifestyle.

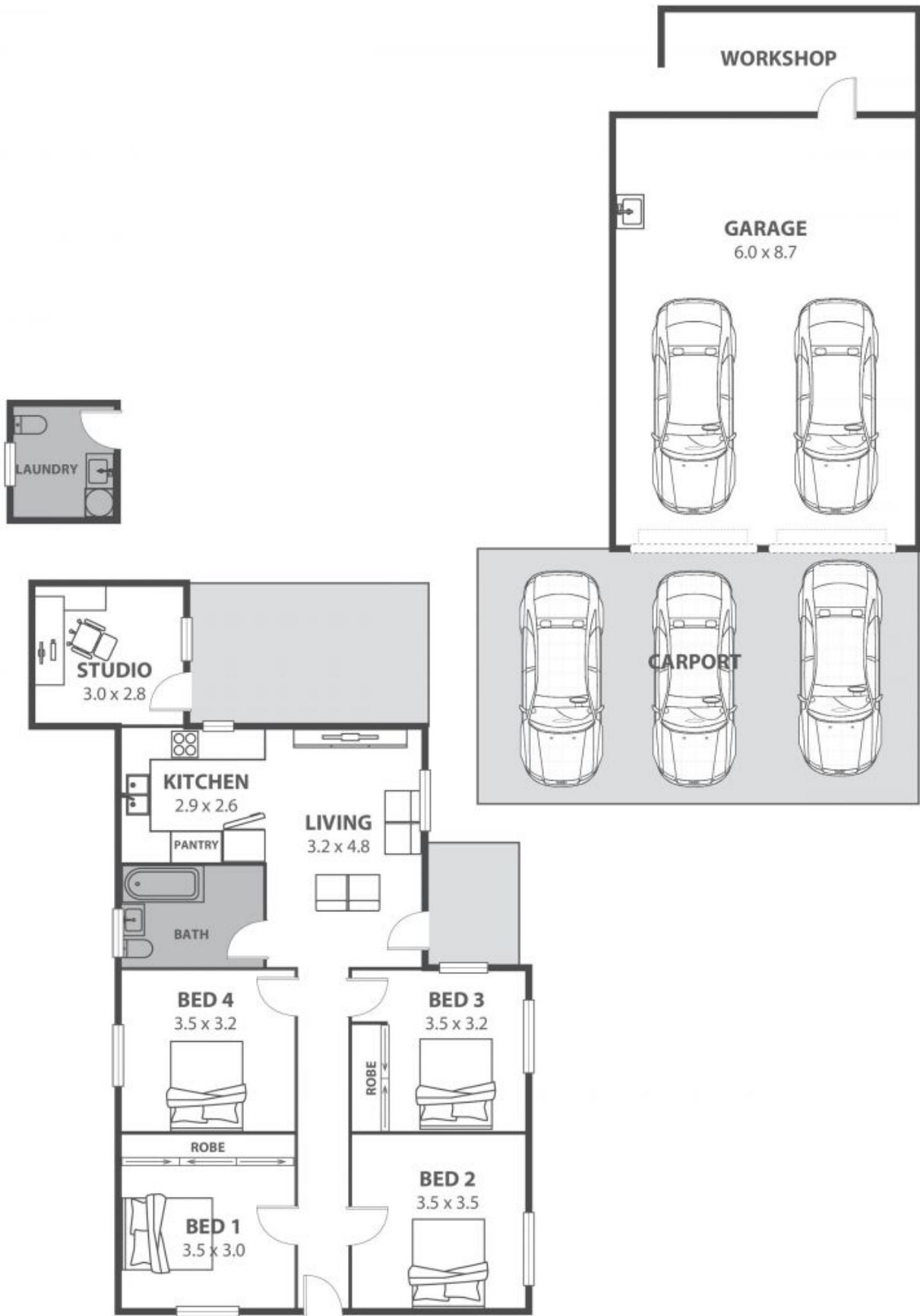
...

Commute to Sydney in 78 minutes (approx.) or walk to Bulli Station in five minutes (approx.) to catch the train....

...

...

**Adam McMahon**



288 Princes Highway, Bulli

Internal Space 151m<sup>2</sup>



Plans shown are for presentation purposes and are not part of any legal document in force and are subject to errors, omissions, inaccuracies and should not be used as sole and accurate reference. Particulars given are for general information only and do not constitute any representation on the part of the vendor or agent. No liability will be accepted.