



2/13 Popes Road Woonona, NSW



3



2



1

Walk to the village from your sunny family terrace!

Close to the beach and just a short stroll to Woonona's village, schools, and parks, this move-in-ready three-bedroom family terrace home presents an exciting opportunity for home buyers and astute investors alike. With sunny interiors perfectly complemented by stunning escarpment views and two spacious outdoor entertaining areas, this is definitely one for the inspection list!

Location

A laidback family lifestyle awaits in this fabulous location, with Woonona Village within easy walking distance and your pick of beautiful beaches only moments from home.

...

Driving to Sydney will take a little over an hour (approx.), or leave the car at either Woonona or Bulli Station, both just four minutes from home (approx.). ...

...

Property...

Ideally positioned within an impressive boutique complex, this welcoming terrace home promises a low-maintenance

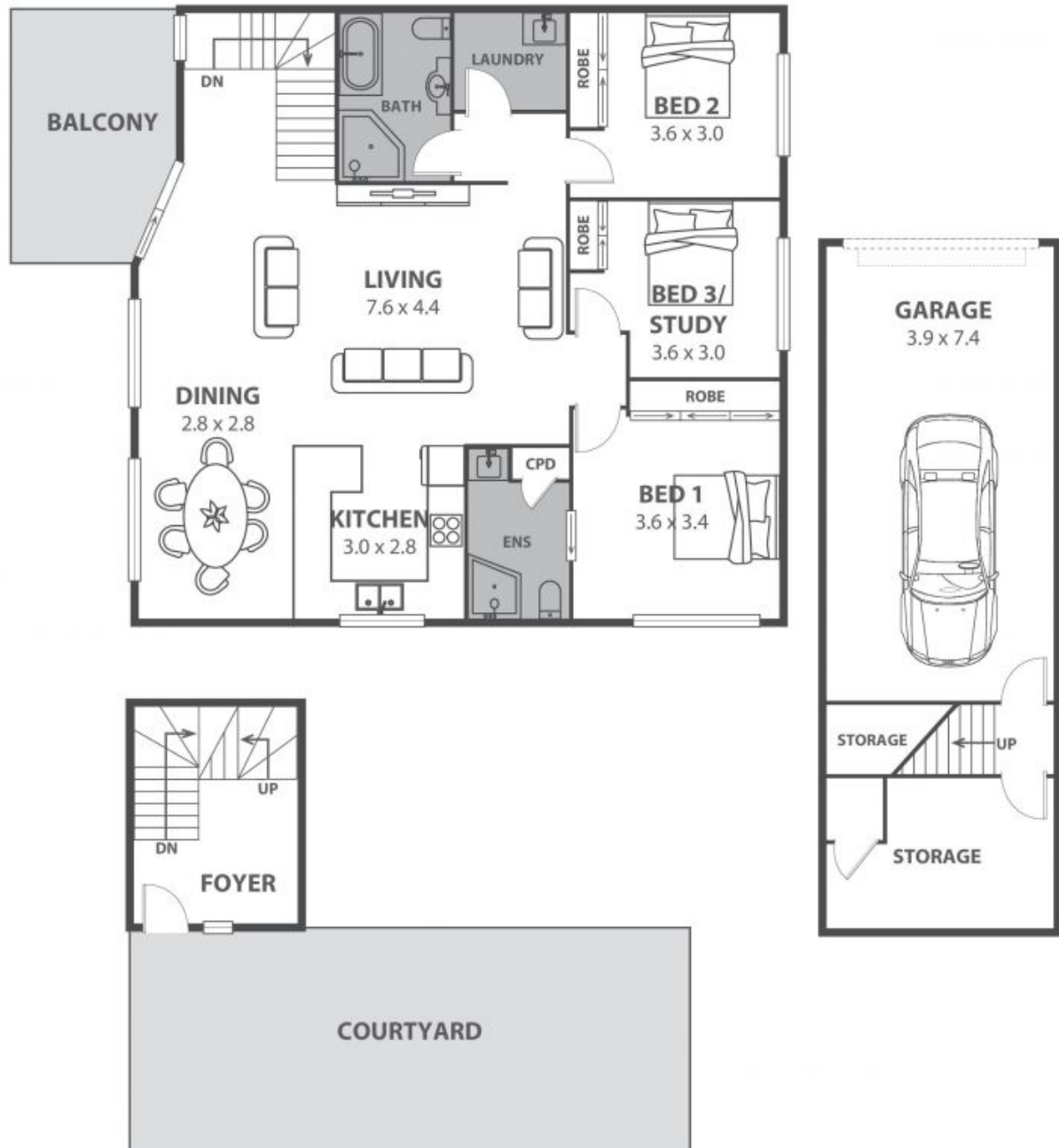
Price: \$1,100,000

Council Rates: \$297.47 p/q

Ethan Hennessy

Ethan Hennessy

02 4267 5377



2/13 Popes Road, Woonona

Internal Space 152m²



Plans shown are for presentation purposes and are not part of any legal document in title and are subject to errors, omissions, inaccuracies and should not be used as sole and accurate reference. Particulars given are for general information only and do not constitute any representation on the part of the vendor or agent. No liability will be accepted.