



32 St Johns Avenue Mangerton, NSW



Mountain views and room to move!

Boasting stunning mountain views, a generous allotment, and a family-friendly location, this spacious three-bedroom, two-bathroom home will delight home-buyers seeking a move-in-ready home with room to grow. Open-plan living and a huge back garden ensure plenty of space for quality family time, while proximity to Figtree Grove and Wollongong's vibrant CBD ensures every convenience is at your fingertips.

Price: \$1,050,000
Council Rates: \$508.24 p/q

LOCATION

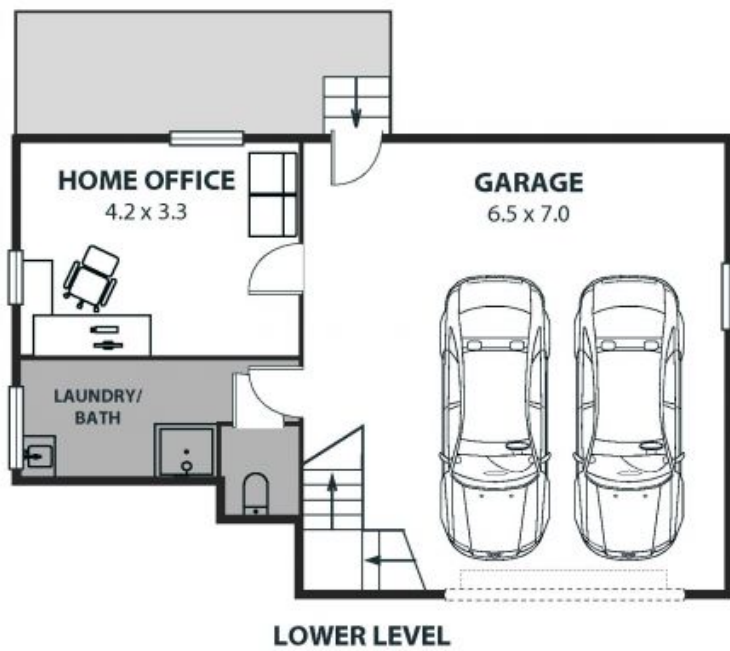
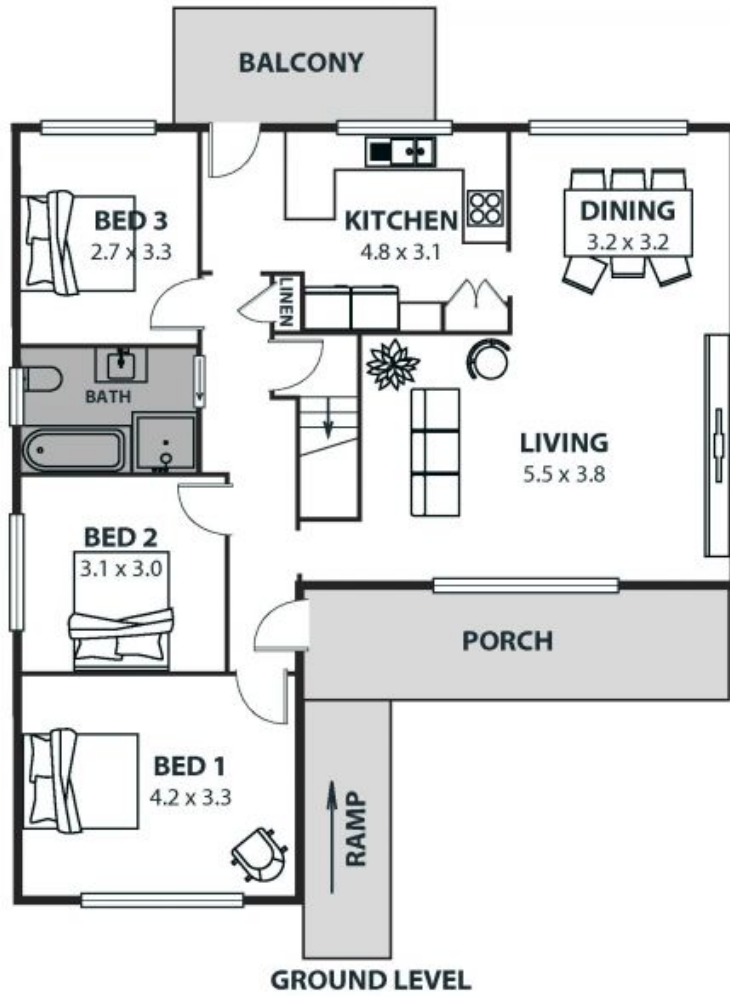
Set on a quiet, leafy street with a stunning mountain backdrop, this location offers a scenic setting for family life.

Families will appreciate Wollongong's city beaches less than ten minutes away (approx.) and the choice of parks and playgrounds within walking distance, including Gorrell Park just a four-minute stroll from home (approx.). The choice of sought-after schools close by increases the family appeal of this address, with Wollongong West Public School, Illawarra Grammar School, and St. Therese Catholic Parish Primary School all within strolling distance, and Wollongong High S

Ethan Hennessy

Isabelle Lace

02 4267 5377



32 St Johns Avenue, Mangerton

Internal Space 163m²



Plans shown are for presentation purposes and are not part of any legal document or offer and are subject to errors, omissions, inaccuracies and should not be used as sole and accurate reference. Particulars given are for general information only and do not constitute any representation on the part of the vendor or agent. No liability will be accepted.