



74 Pastureland Street Kembla Grange, NSW



## Modern family living with spectacular mountain views!

Fresh mountain air and easy family living await in this move-in-ready four-bedroom home, ideally situated moments from every convenience and within easy reach of Wollongong and a choice of beautiful beaches.

**Price:** \$880,000

**Council Rates:** \$421.75 p/q

### LOCATION

Perfectly oriented to take in spectacular mountain views, this welcoming home boasts a family-friendly location just moments from local cafes, schools, and shops, with Wollongong's vibrant CBD and stunning city beaches just 14 minutes away (approx.).

Dapto Public School and Dapto High School are both a short drive from home ensuring a stress-free commute to school, while Dapto's train station promises easy trips to Wollongong and Sydney....

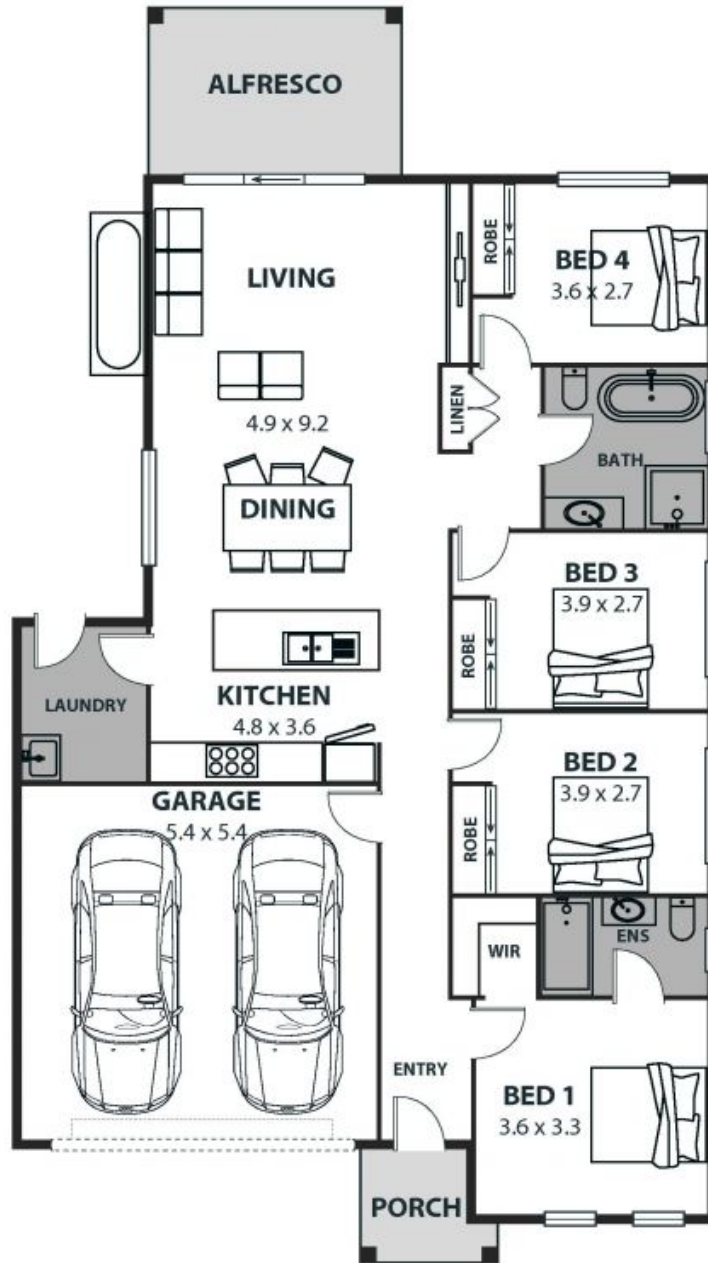
...  
PROPERTY...

...  
Families seeking a move

**Ethan Hennessy**

**Ange Carrigan**

02 4267 5377



# 74 Pastureland Street, Kembla Grange

Internal Space 147m<sup>2</sup>



Plans shown are for presentation purposes and are not part of any legal document or title and are subject to errors, omissions, inaccuracies and should not be used as sole and accurate reference. Particulars given are for general information only and do not constitute any representation on the part of the vendor or agent. No liability will be accepted.