



30 Bloomfield Avenue Corrimal, NSW



4



1



3

COTTAGE CHARM IN CENTRAL CORRIMAL

With the Illawarra Escarpment providing a majestic backdrop and Lemrac Park right next door, this property boasts a picturesque location that's sure to impress. Tucked away in a quiet street of Corrimal is this four bedroom home boasting cottage charm and polished floorboards throughout. Nestled towards the rear of the block for privacy and nearby to Corrimal shopping hub ensuring all services are only moments away.

Features include:

- Spacious lounge and separate dining area
- Four bedrooms, three with built in wardrobes.
- Updated light filled kitchen with electric cook top and access to backyard
- Family-sized bathroom with additional guest powder room,
- Off street parking for multiple vehicles & spacious storage area
- Picturesque views of the Illawarra Escarpment and enclosed yard

Price: \$660 pw

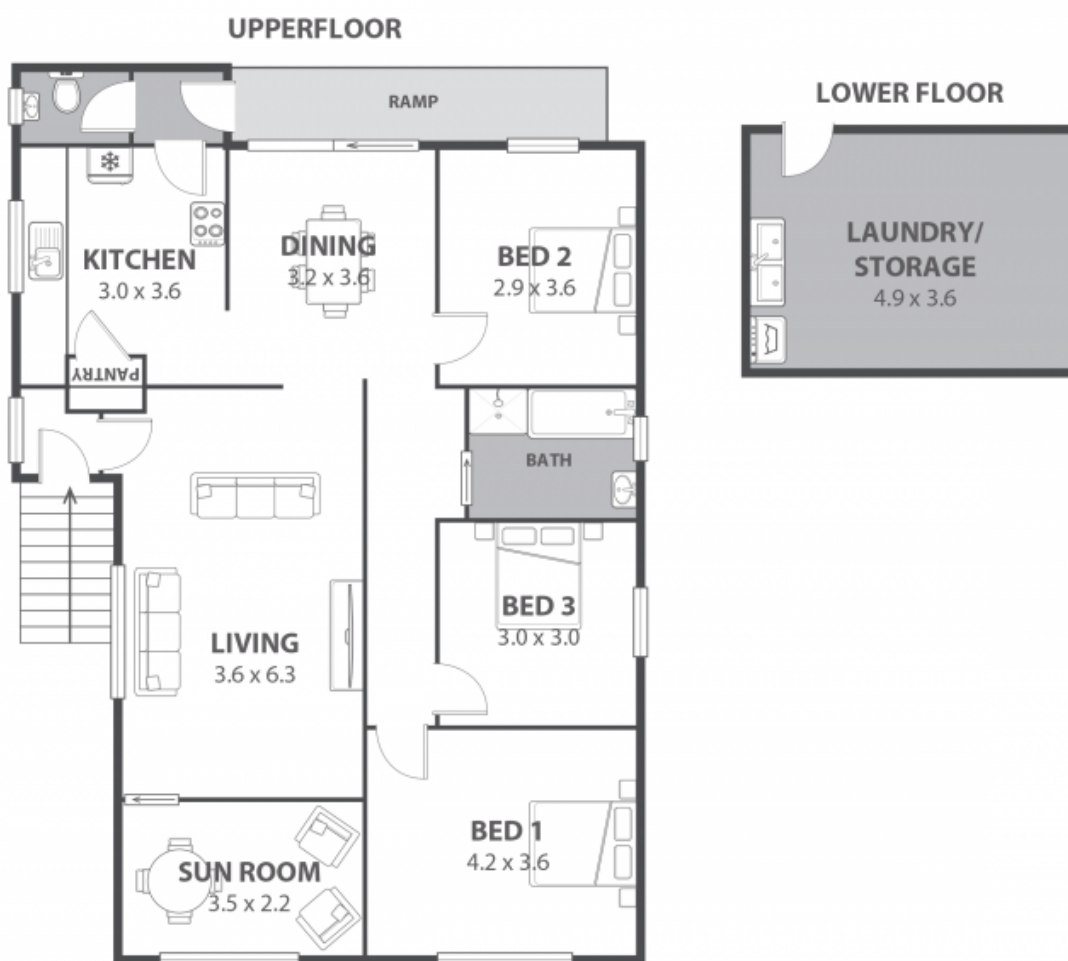
Available Date: 2023-04-05

Dignam Real Estate

Property Management

Click 'Apply' when on r

www.dignam.com.au



30 Bloomfield Avenue, Corrimal

Internal Space 134m²



Plans shown are for presentation purposes and are not part of any legal document or title and are subject to errors, omissions, inaccuracies and should not be used as sole and accurate reference. Particulars given are for general information only and do not constitute any representation on the part of the vendor or agent. No liability will be accepted.