



9/6 Pitman Lane Woonona, NSW



3



1



1

Peaceful apartment living with stunning mountain views!

Situated in a quiet cul de sac within easy walking distance of Woonona Village, schools, and transport, this move-in-ready three-bedroom apartment offers a tranquil, convenient lifestyle and breathtaking mountain views. With scope for updates and high rental appeal, this home will excite first-home buyers and clever investors alike.

Location

Enviably positioned a five-minute walk from Woonona Village (approx.) and an easy stroll from Bulli Village, this fabulous location places cafes, restaurants, and shops within easy reach and promises the convenient coastal lifestyle you've been dreaming of.

...

Property...

...

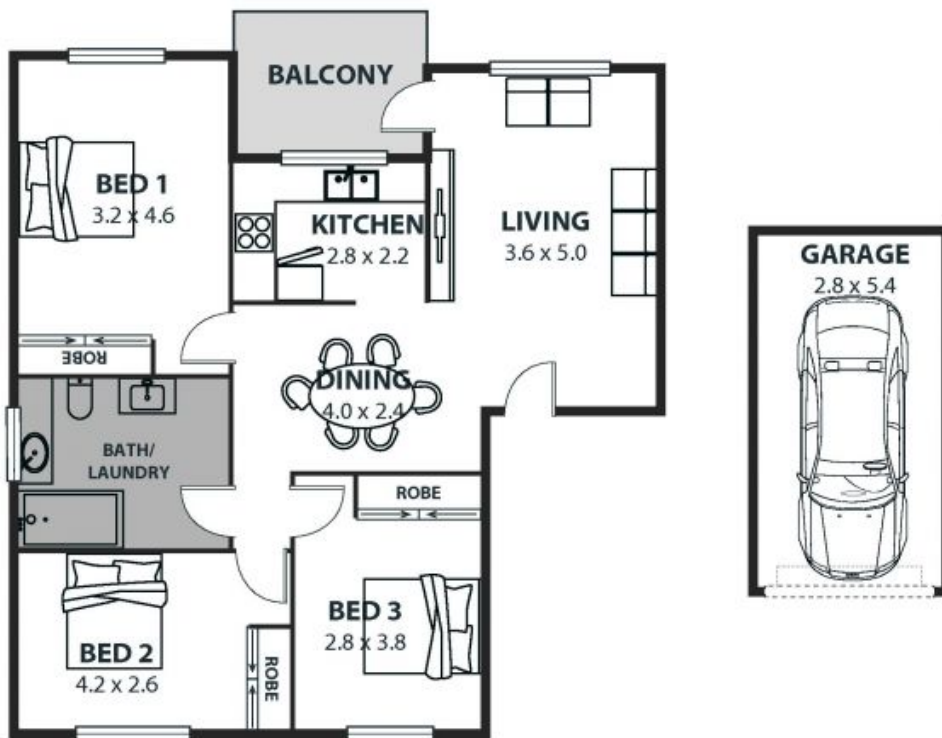
Nestled within a well-kept complex surrounded by leafy gardens, this spacious apartment offers low-maintenance li

Price: Contact Agent
Council Rates: \$329.35 p/q
Strata Rates: \$785.05 p/q

Ethan Hennessy

Isabelle Lace

02 4267 5377



9/6 Pitman Lane, Woonona

Internal Space 97m²



Plans shown are for presentation purposes and are not part of any legal document or title and are subject to errors, omissions, inaccuracies and should not be used as sole and accurate reference. Particulars given are for general information only and do not constitute any representation on the part of the vendor or agent. No liability will be accepted.