



69 Neeson Road Kembla Grange, NSW



## Luxury family living with plenty of room to GROW!

Set on a prime corner allotment in the sought-after Kembla Grange Estate, this fabulous home embodies five-star family living with loads of room to move. Unfolding over two levels the family-friendly floor plan offers six bedrooms complemented by multiple living areas for enviable flexibility. Outside superb alfresco entertaining awaits, with the huge garden space sure to delight those with kids and pets.

**Price:** \$1,600,000

**Council Rates:** \$384.35 p/q

### LOCATION

Boasting a sprawling corner allotment directly opposite stunning bushland, this fabulous address delivers beautiful mountain views and places every convenience close to home.

...

### PROPERTY...

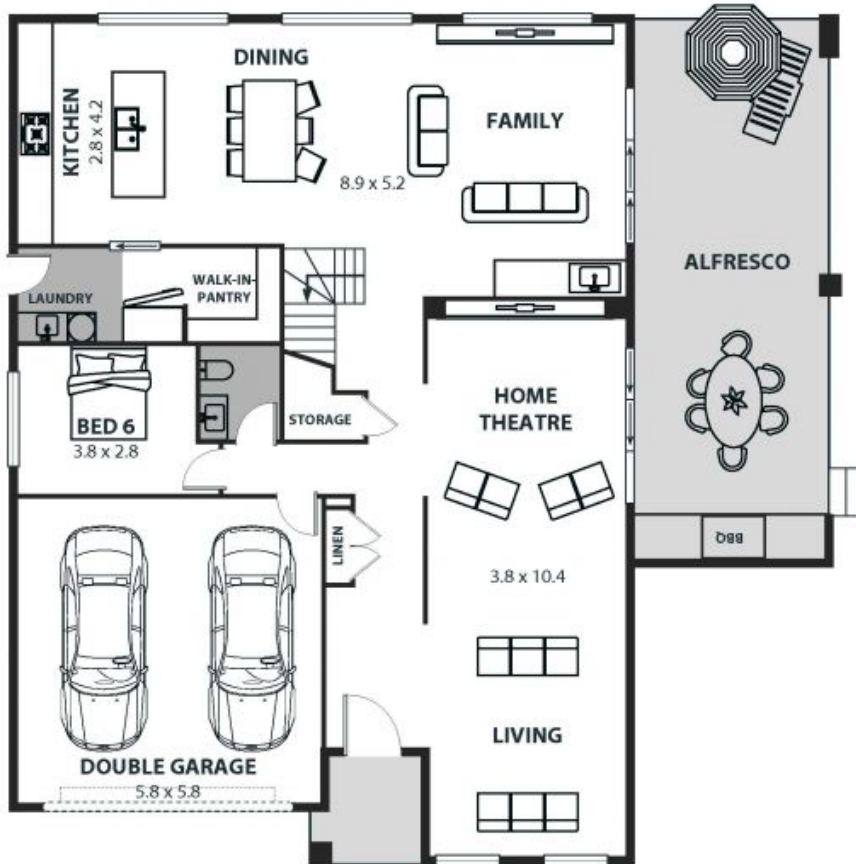
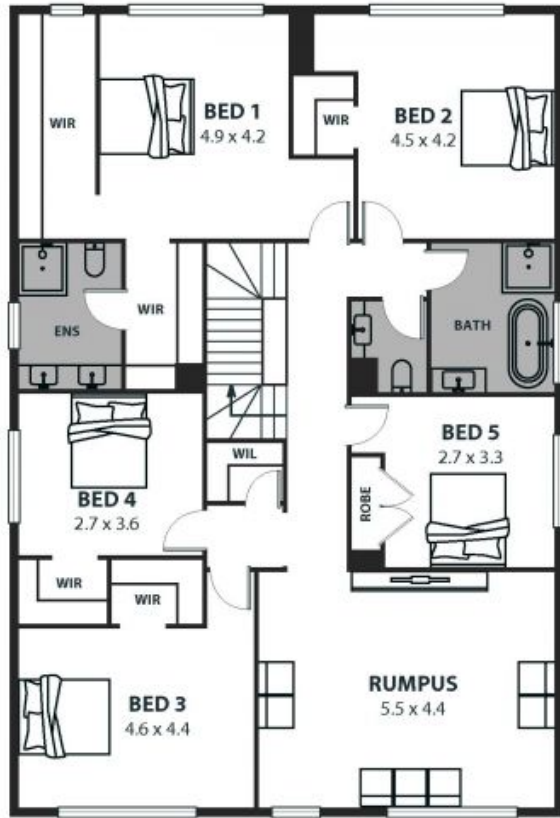
...

Boasting six generous bedrooms, three huge living spaces, two bathrooms, and a huge back garden with a superb ent

**Ethan Hennessy**

**Isabelle Lace**

02 4267 5377



## 69 Neeson Road, Kembla Grange

Internal Space 352m<sup>2</sup>



Plans shown are for presentation purposes and are not part of any legal document. WIRs and are subject to error, omissions, inaccuracies and should not be used as sole and accurate reference. Particulars given are for general information only and do not constitute any representation on the part of the vendor or agent. No liability will be accepted.